

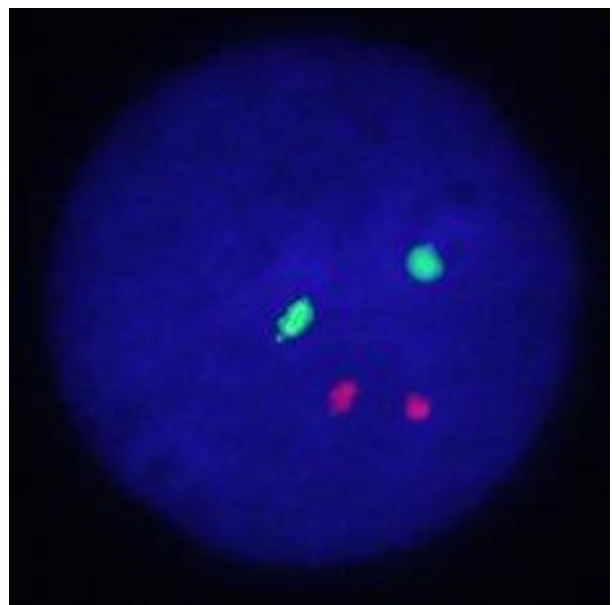
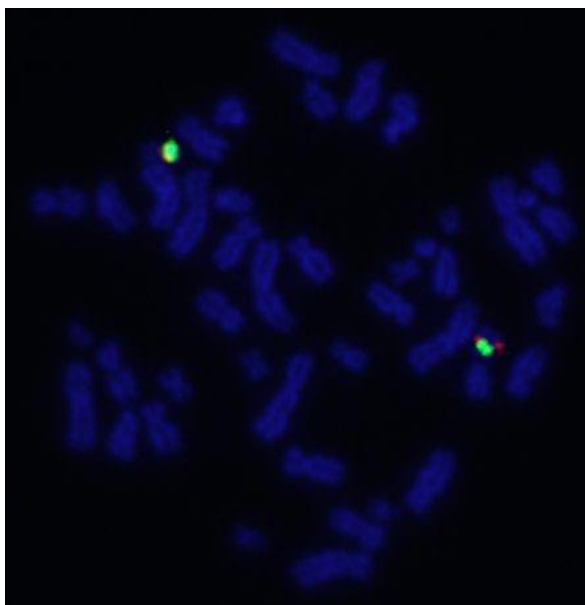
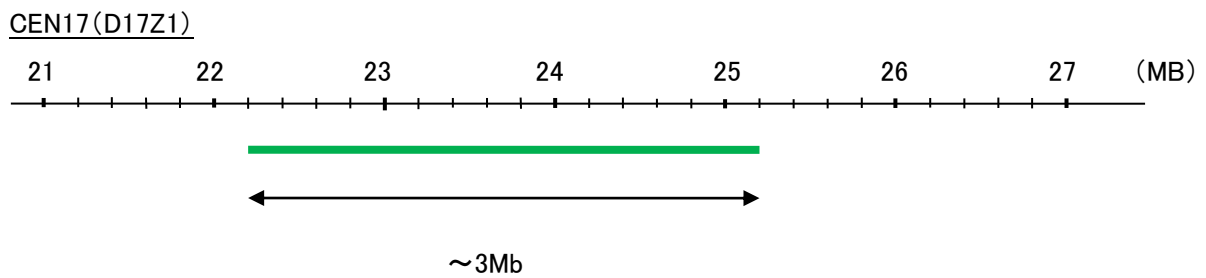
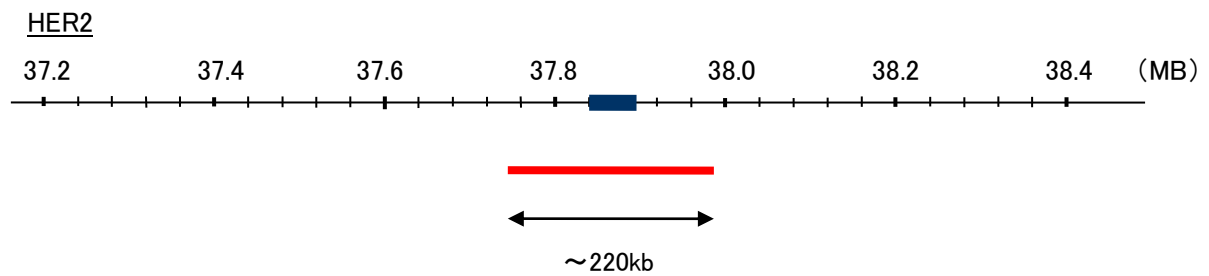
Probe HER2/GEN17 Dual Color FISH Probe  
Product No. GC207

**HER2**

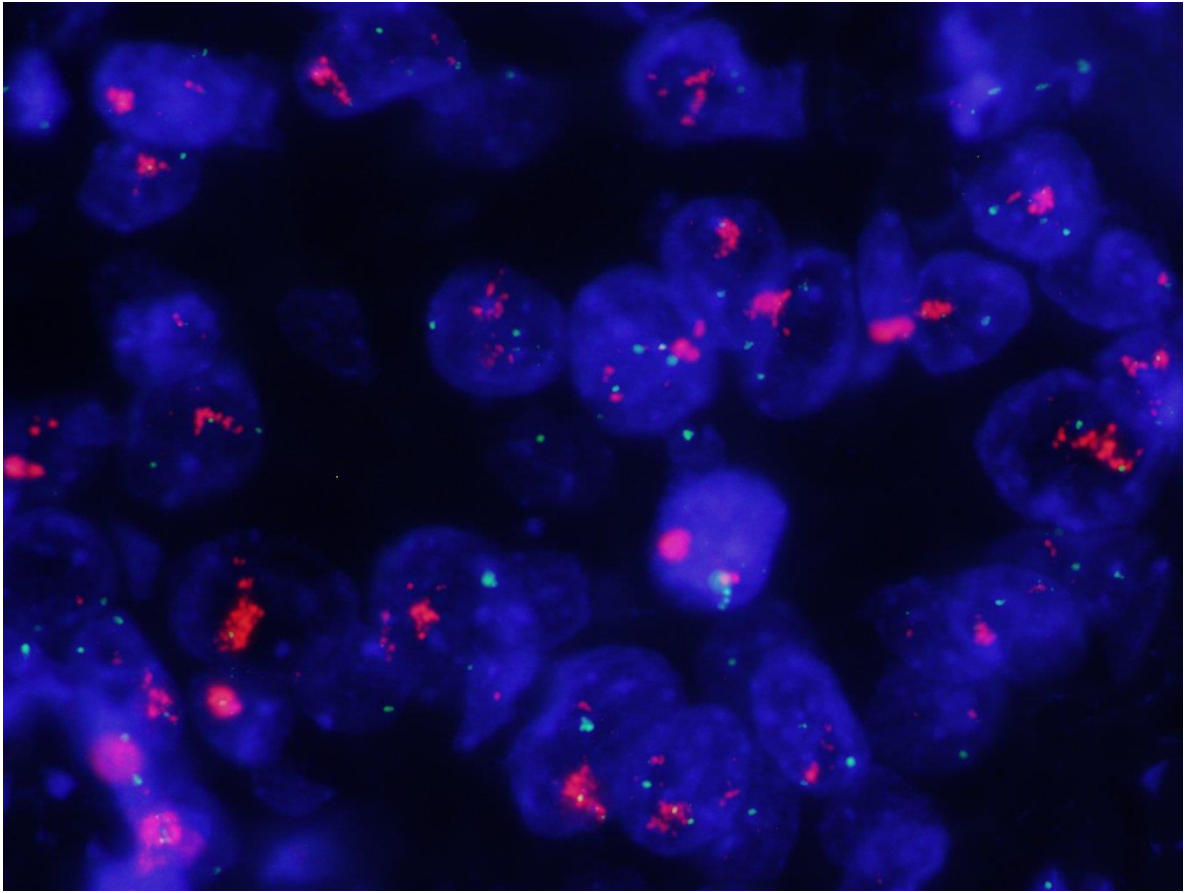
Probe Size Approximately 220kb  
Fluorophore TexRed  
Location 17q21.1  
Also known as NEU; NGL; ERBB2; TKR1; CD340; HER-2; MLN 19; HER-2/neu

**GEN17 (D17Z1)**

Fluorophore FITC  
Location 17p11.1-17q11.1



Representative images of normal human cell (lymphocyte) stain with the dual color FISH probe. The left image is chromosomes at metaphase, and the right image is an interphase nucleus.



Representative images of breast cancer stain with the dual color FISH probe. The left image is chromosomes at metaphase, and the right image is an interphase nucleus.