

Probe SMAD4 /CEN18q FISH Probe
Product No. GC208

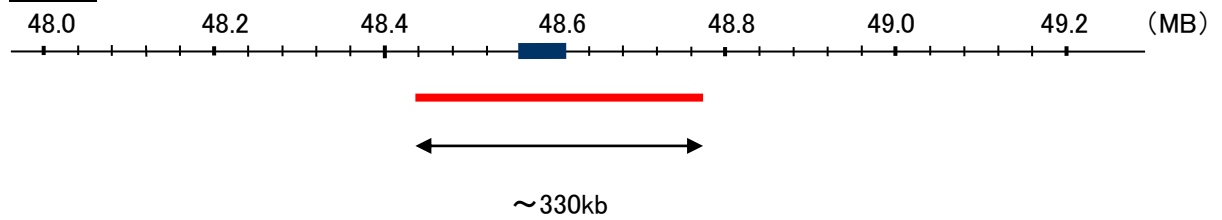
SMAD4

Probe Size Approximately 330kb
Fluorophore TexRed
Location 18q21.2
Also known as JIP; DPC4; MADH4; MYHRS

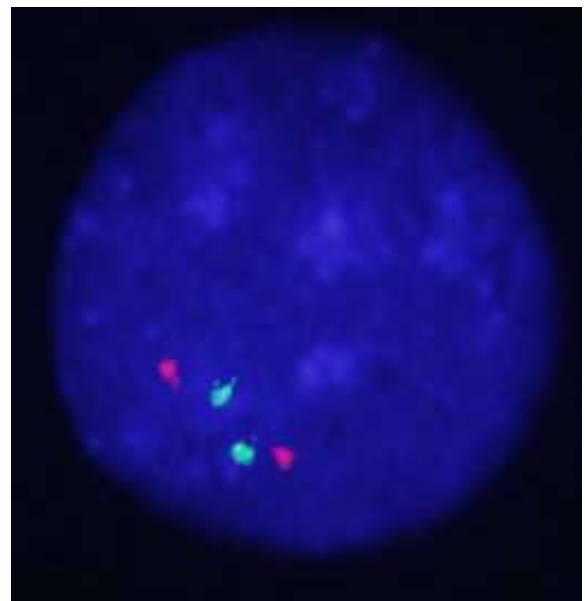
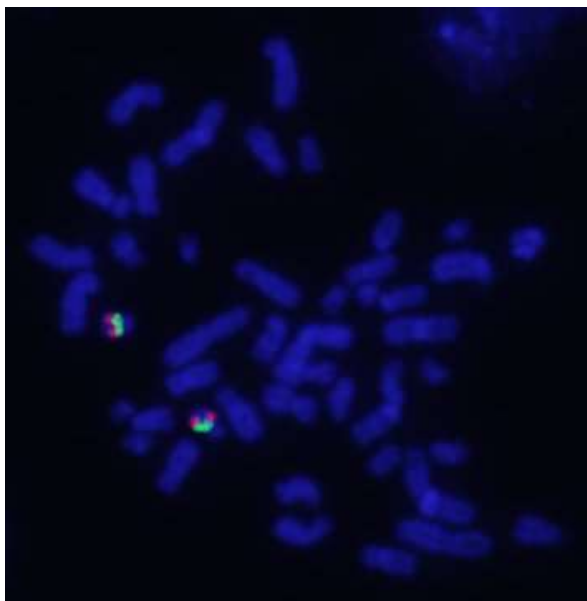
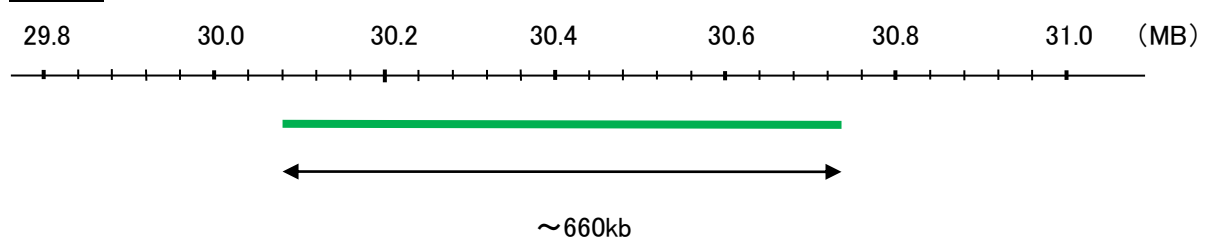
CEN18q

Probe Size Approximately 660kb
Fluorophore FITC
Location 18q12.1

SMAD4



CEN18q



Representative images of breast cancer stain with the dual color FISH probe. The left image is chromosomes at metaphase, and the right image is an interphase nucleus.