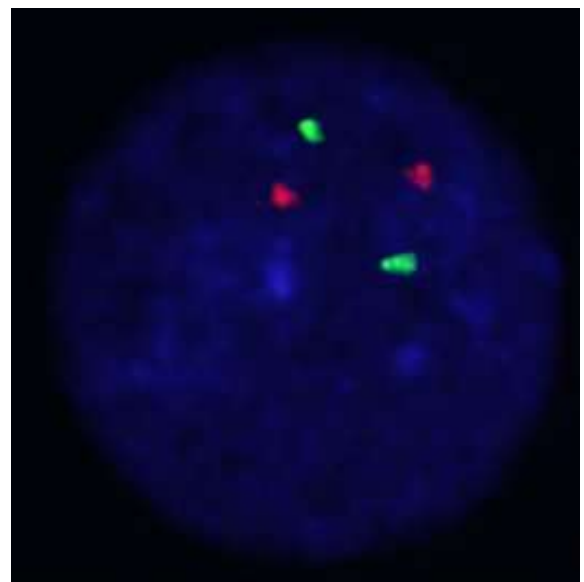
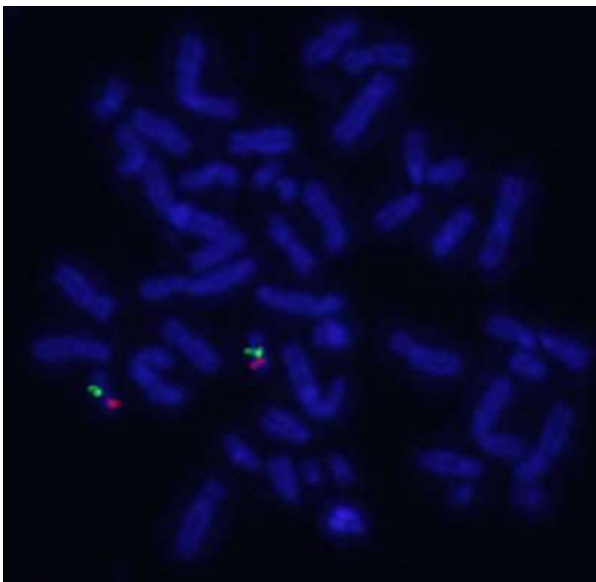
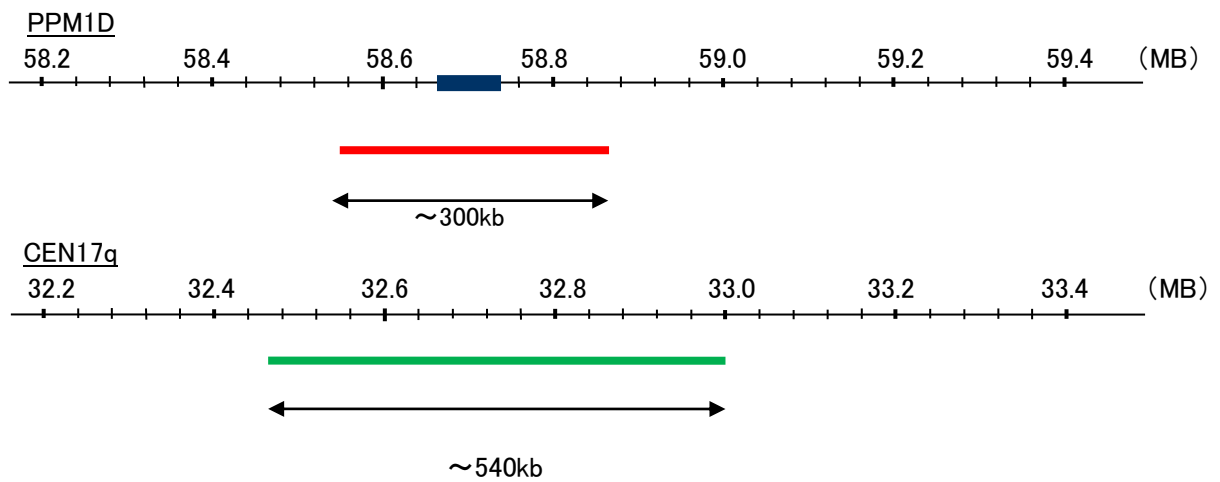


Probe PPM1D/CEN17q Dual Color FISH Probe  
Product No. GC212

PPM1D  
Probe Size Approximately 300kb  
Fluorophore TexRed  
Location 17p23.2  
Also known as WIP1; IDGIP; PP2C-DELTA

CEN17q  
Probe Size Approximately 540kb  
Fluorophore FITC  
Location 17q12



Representative images of breast cancer stain with the dual color FISH probe. The left image is chromosomes at metaphase, and the right image is an interphase nucleus.