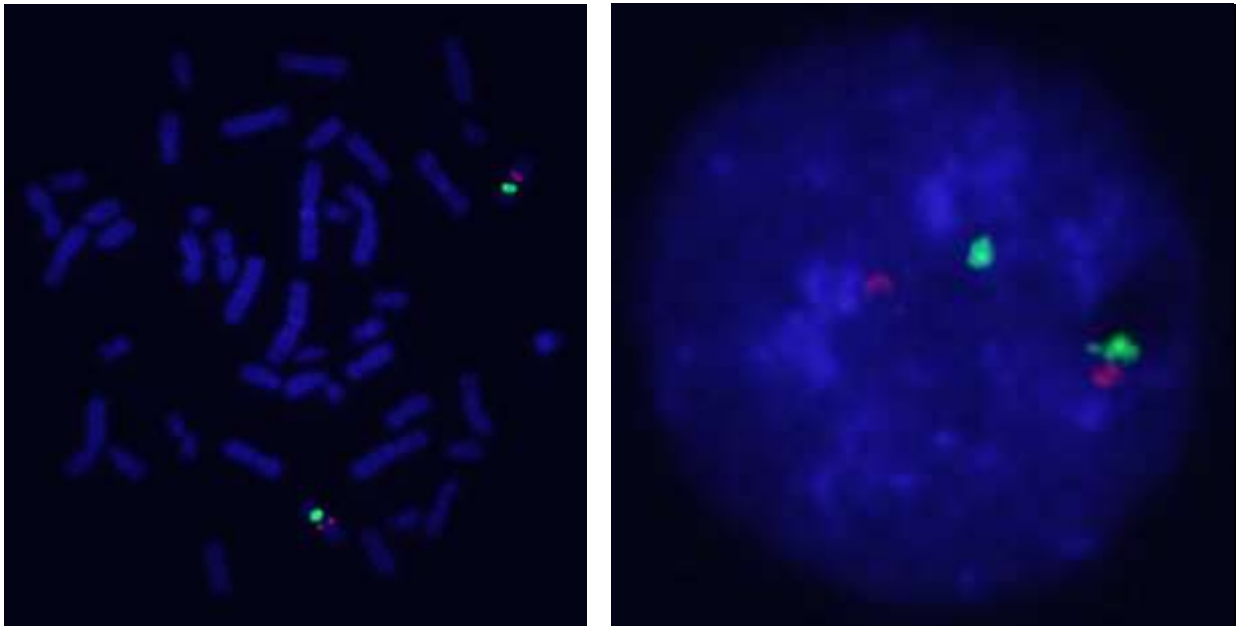
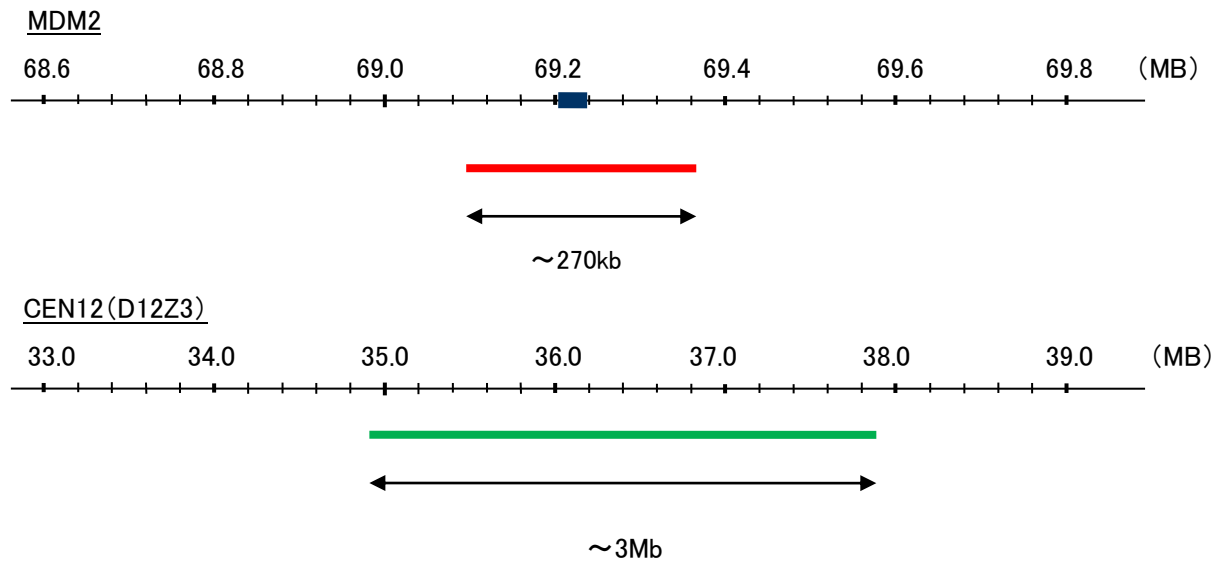


Probe MDM2/CEN12 Dual Color FISH Probe
Product No. GC220

MDM2
Probe Size Approximately 270kb
Fluorophore TexRed
Location 12q14.3—q15
Also known as HDMX; hdm2; ACTFS

CEN12(D12Z3)
Probe Size Approximately 3Mb
Fluorophore FITC
Location 12p11.1—q11



representative images of normal human cell (lymphocyte) stain with the dual color FISH probe. The left image is chromosomes at metaphase, and the right image is an interphase nucleus.