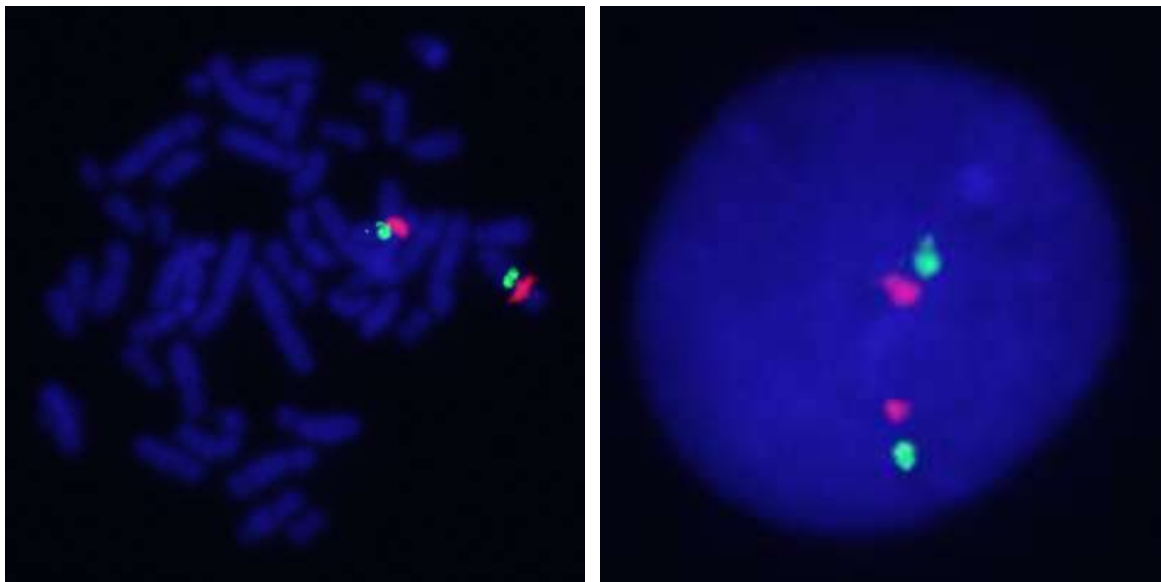
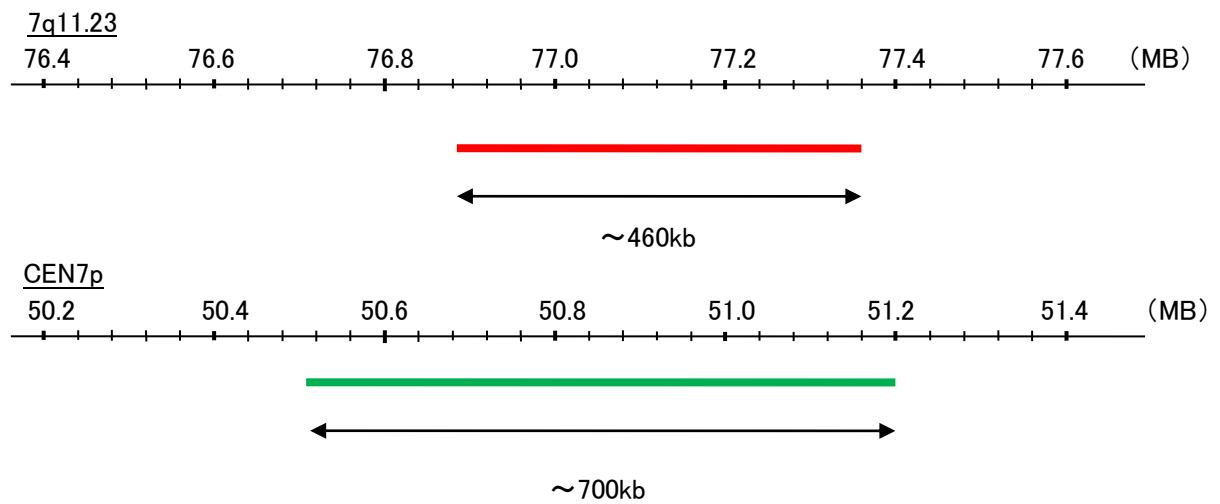


Probe 7q11.23/CEN7p Dual Color FISH Probe
Product No. GC238

7q11.23
Probe Size Approximately 460kb
Fluorophore TexRed
Location 7q11.23

CEN7p
Probe Size Approximately 700kb
Fluorophore FITC
Location 7p12.1



representative images of normal human cell (lymphocyte) stain with the dual color FISH probe. The left image is chromosomes at metaphase, and the right image is an interphase nucleus.