

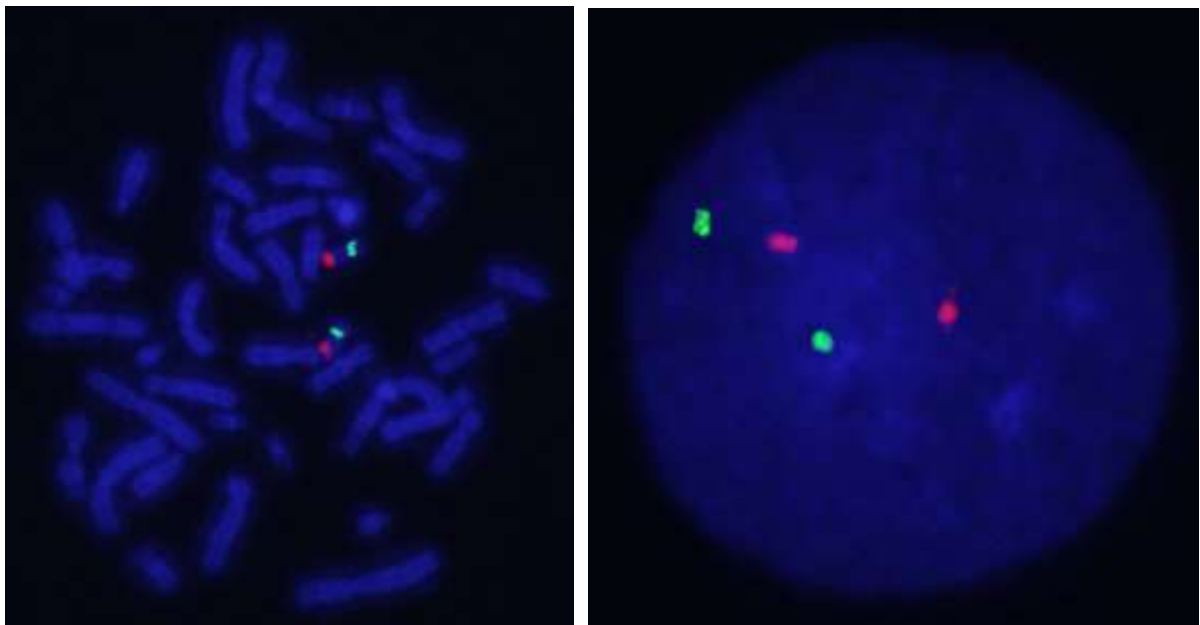
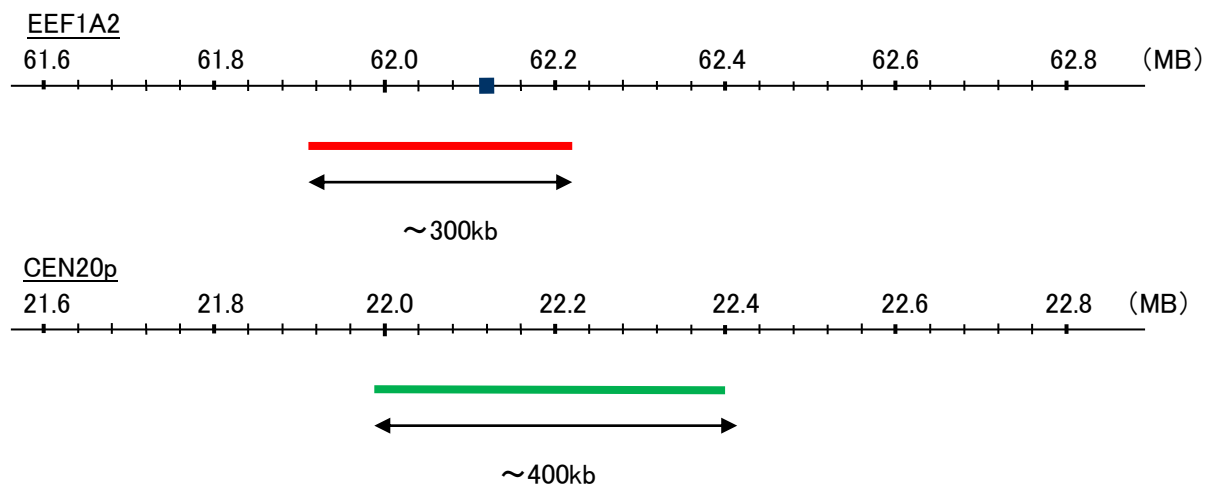
Probe EEF1A2/CEN20p Dual Color FISH Probe
Product No. GC240

EEF1A2

Probe Size Approximately 300kb
Fluorophore TexRed
Location 20q13.33
Also known as HS1; STN; EF1A; STNL; DEE33; MRD38; EEF1AL; EIEE33; EF-1-alpha-2

CEN20p

Probe Size Approximately 400kb
Fluorophore FITC
Location 20p11.21



representative images of normal human cell (lymphocyte) stain with the dual color FISH probe. The left image is chromosomes at metaphase, and the right image is an interphase nucleus.