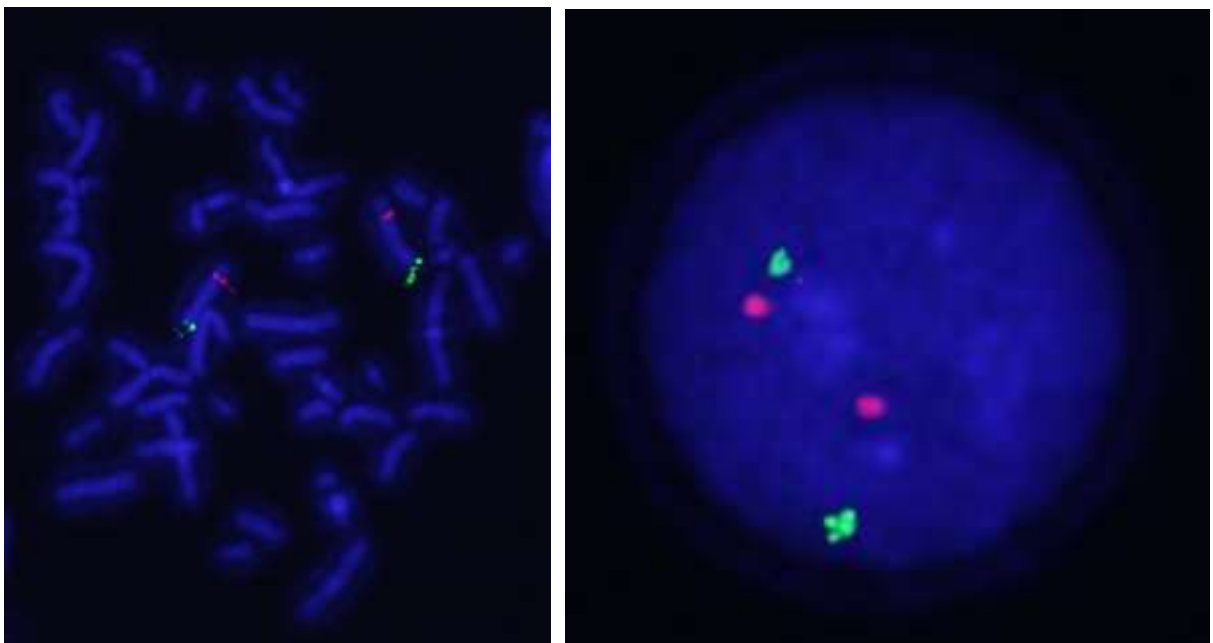
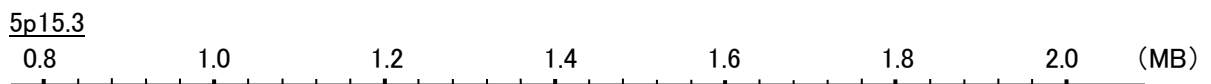
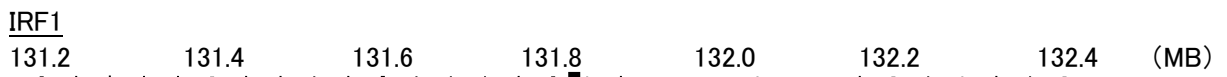


Probe IRF1/5p15.3 Dual Color FISH Probe  
Product No. GC242

IRF1  
Probe Size Approximately 210kb  
Fluorophore TexRed  
Location 5q31.3  
Also known as MAR; IRF-1

5p15.3  
Probe Size Approximately 200kb  
Fluorophore FITC  
Location 5p15.3



representative images of normal human cell (lymphocyte) stain with the dual color FISH probe. The left image is chromosomes at metaphase, and the right image is an interphase nucleus.