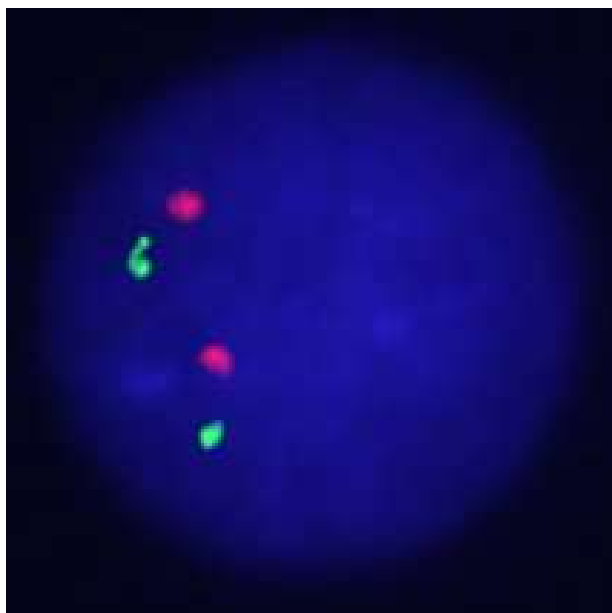
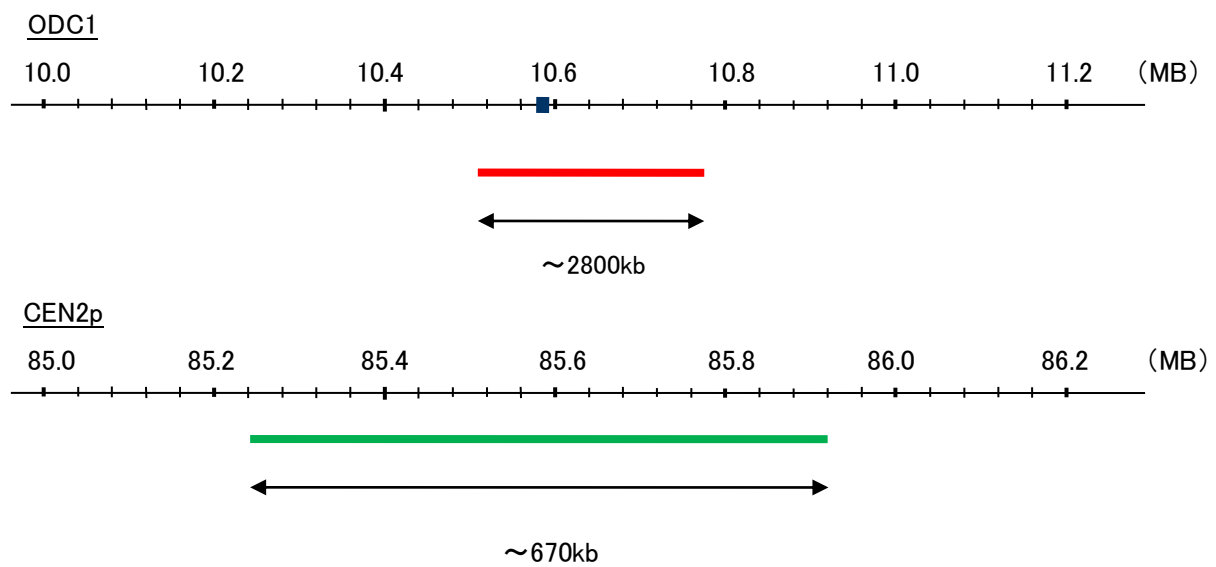


Probe ODC1/CEN2p Dual Color FISH Probe  
Product No. GC243

ODC1  
Probe Size Approximately 280kb  
Fluorophore TexRed  
Location 2p25.1  
Also known as ODC; BABS; NEDBA; NEDBIA

CEN2p  
Probe Size Approximately 670kb  
Fluorophore FITC  
Location 2p11.2



representative images of normal human cell (lymphocyte) stain with the dual color FISH probe. The left image is chromosomes at metaphase, and the right image is an interphase nucleus.