

Probe HSP90AA1/CEN14q Dual Color FISH Probe
Product No. GC252

HSP90AA1

Probe Size Approximately 380kb

Fluorophore TexRed

Location 14q32.31

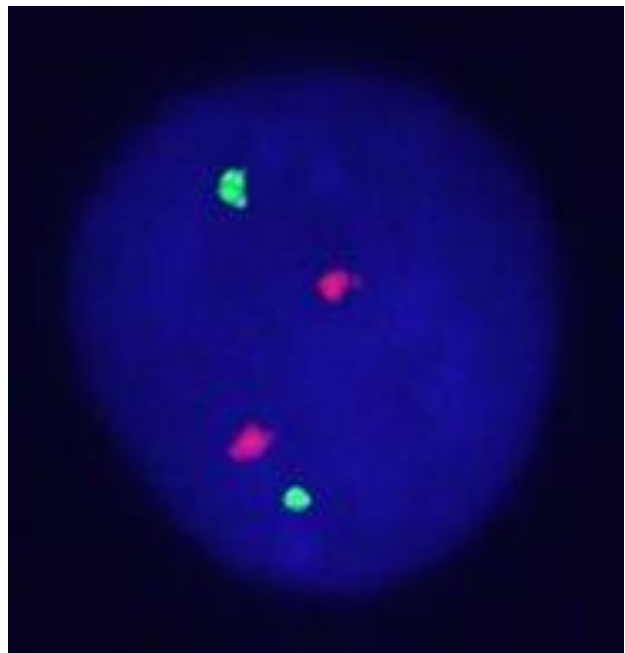
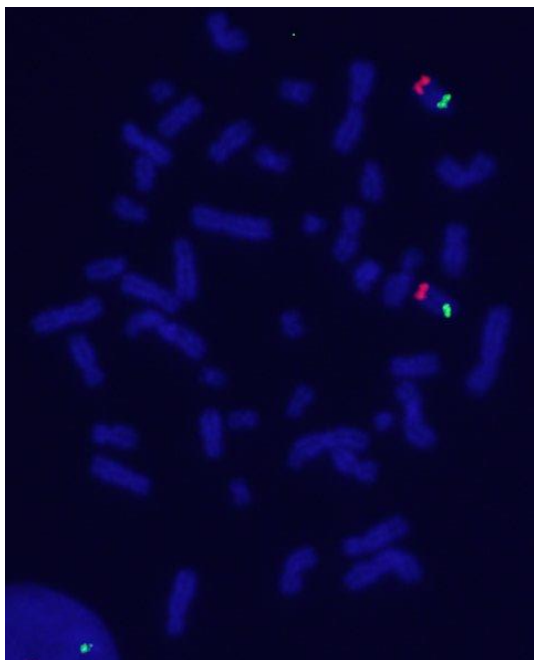
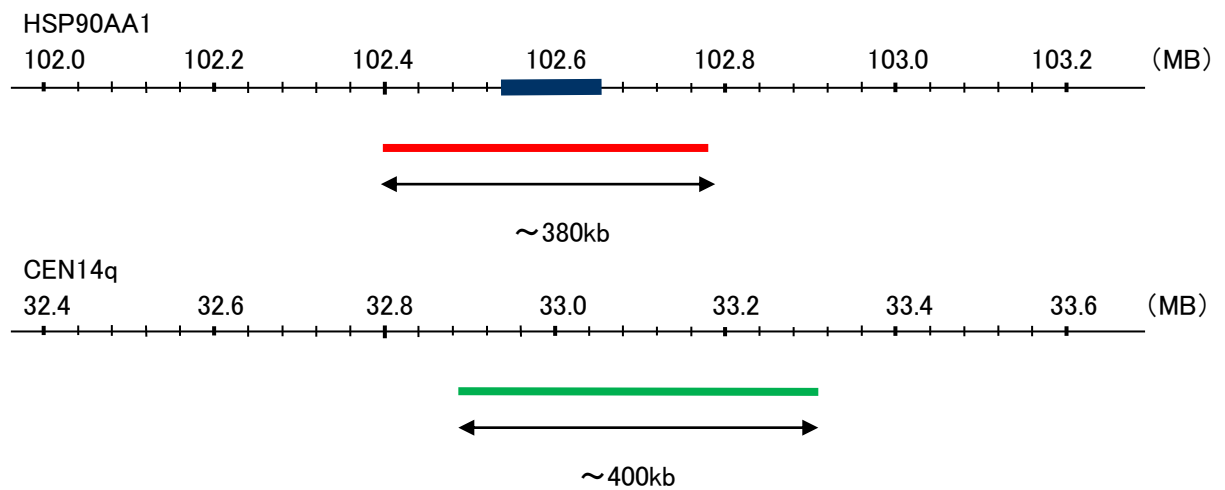
Also known as EL52; HSPN; LAP2; HSP86; HSPC1; HSPCA; Hsp89; Hsp90; LAP-2; HSP89A; HSP90A; HSP90N; Hsp103; HSPCAL1; HSPCAL4; HEL-S-65p

CEN14q

Probe Size Approximately 400kb

Fluorophore FITC

Location 14q12



representative images of normal human cell (lymphocyte) stain with the dual color FISH probe. The left image is chromosomes at metaphase, and the right image is an interphase nucleus.