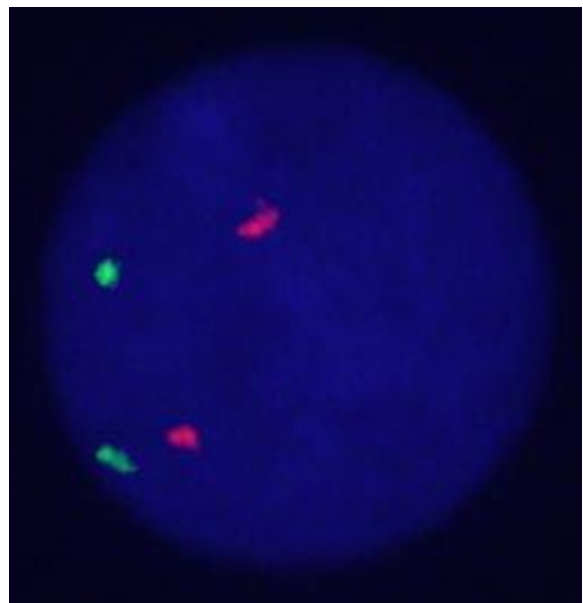
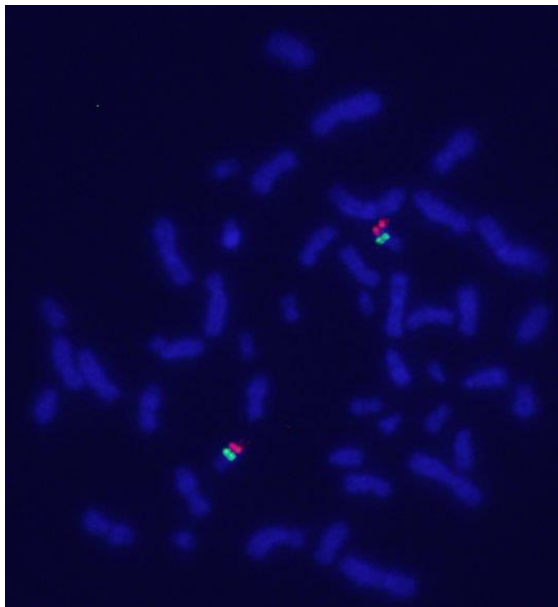
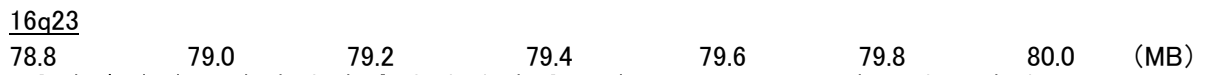


Probe 16q23./CEN16q Dual Color FISH Probe
Product No. GC254

16q23
Probe Size Approximately 430kb
Fluorophore TexRed
Location 16q23.2

CEN16q
Probe Size Approximately 700kb
Fluorophore FITC
Location 16q12.1



representative images of normal human cell (lymphocyte) stain with the dual color FISH probe. The left image is chromosomes at metaphase, and the right image is an interphase nucleus.