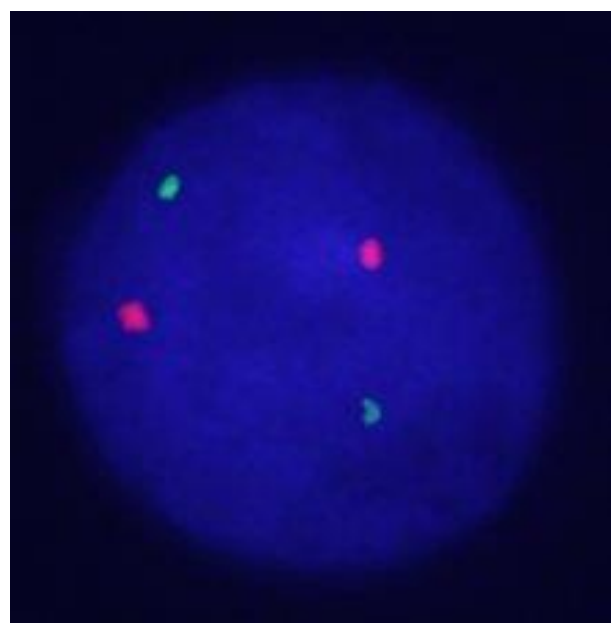
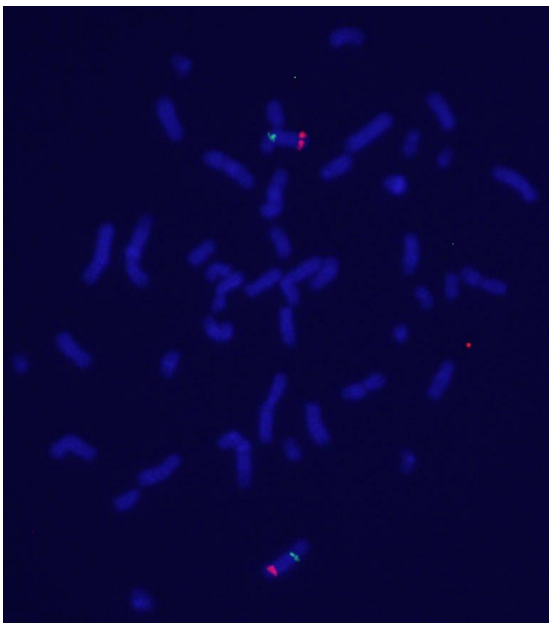
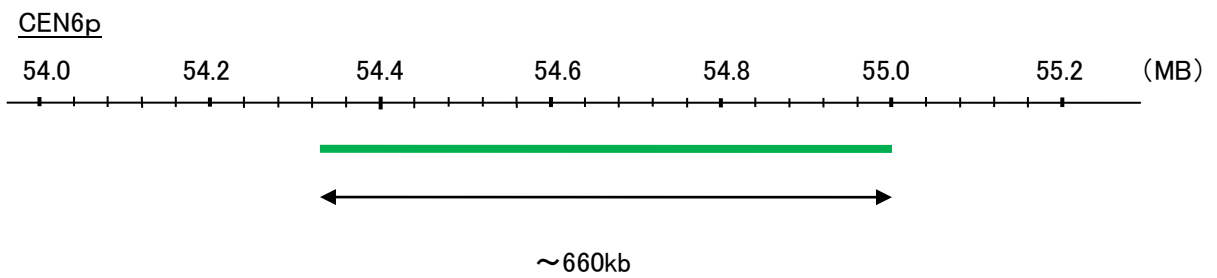
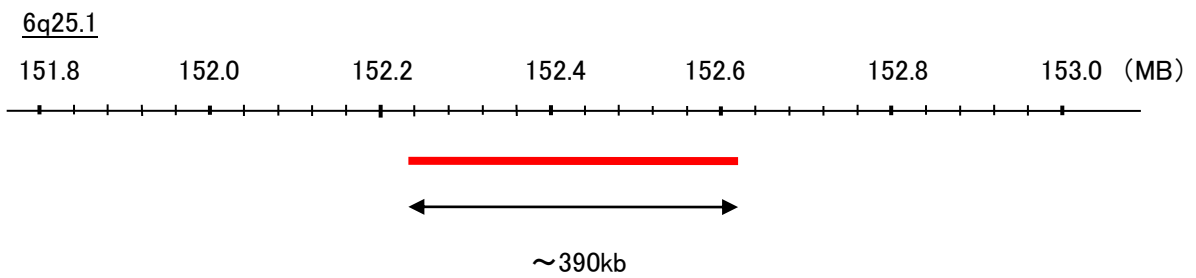


Probe 6q25.1/CEN6p Dual Color FISH Probe
Product No. GC255

6q25.1
Probe Size Approximately 390kb
Fluorophore TexRed
Location 6q25.1

CEN6p
Probe Size Approximately 660kb
Fluorophore FITC
Location 6p12.1



representative images of normal human cell (lymphocyte) stain with the dual color FISH probe. The left image is chromosomes at metaphase, and the right image is an interphase nucleus.