

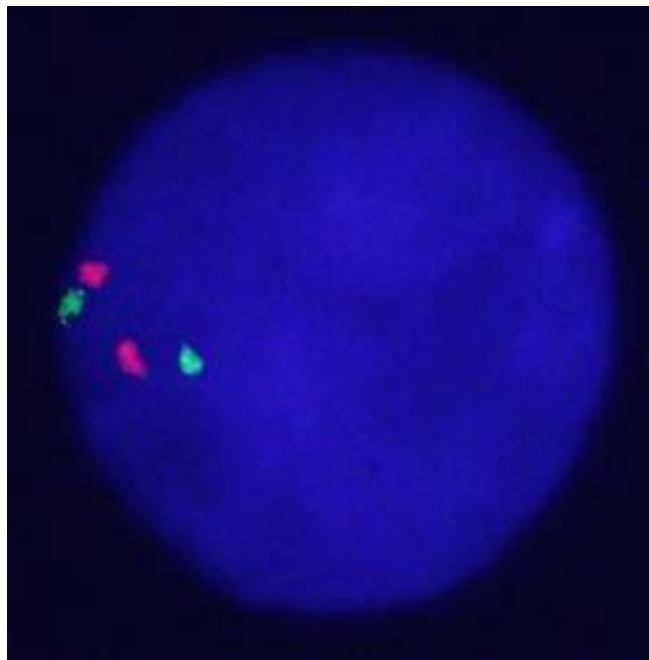
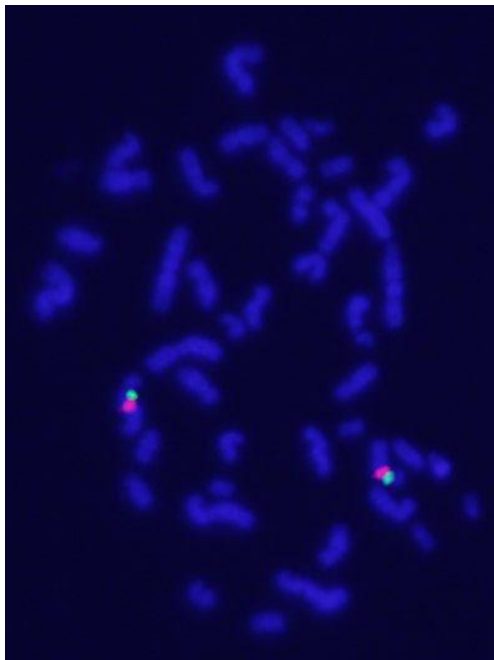
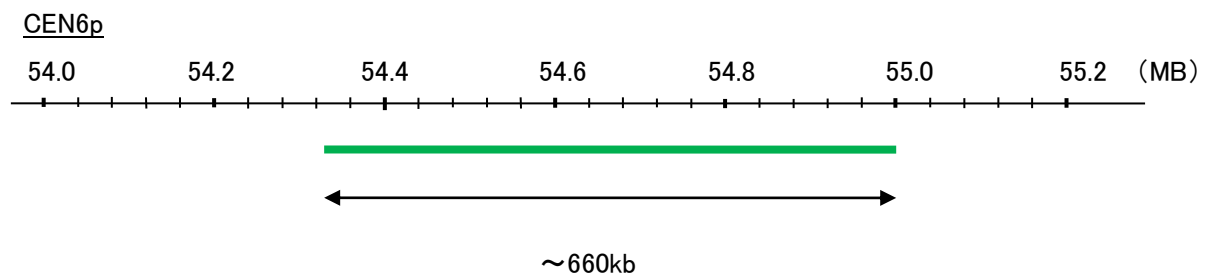
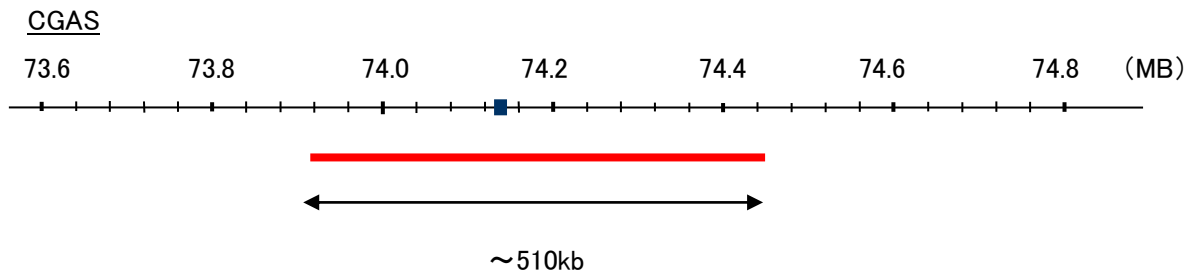
Probe CGAS/CEN6p Dual Color FISH Probe  
Product No. GC257

CGAS

Probe Size Approximately 510kb  
Fluorophore TexRed  
Location 6q13  
Also known as D4; MB21D1; h-cGAS; C6orf150

CEN6p

Probe Size Approximately 660kb  
Fluorophore FITC  
Location 6p12.1



representative images of normal human cell (lymphocyte) stain with the dual color FISH probe. The left image is chromosomes at metaphase, and the right image is an interphase nucleus.