

Probe PPARGC1A/CEN4q Dual Color FISH Probe
Product No. GC260

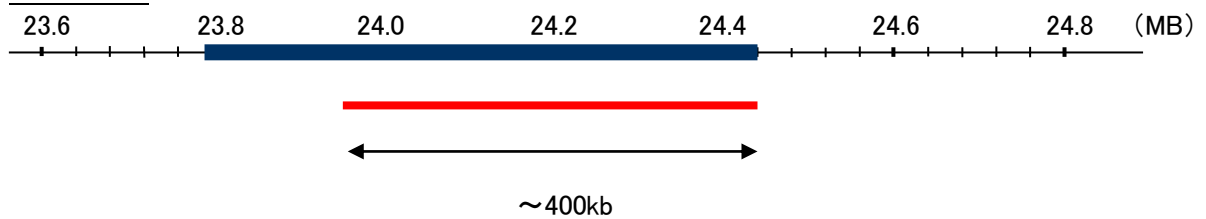
PPARGC1A

Probe Size Approximately 480kb
Fluorophore TexRed
Location 4p15.2
Also known as LEM6; PGC1; PGC1A; PGC-1v; PPARGC1; PGC-1alpha; PGC-1(alpha)

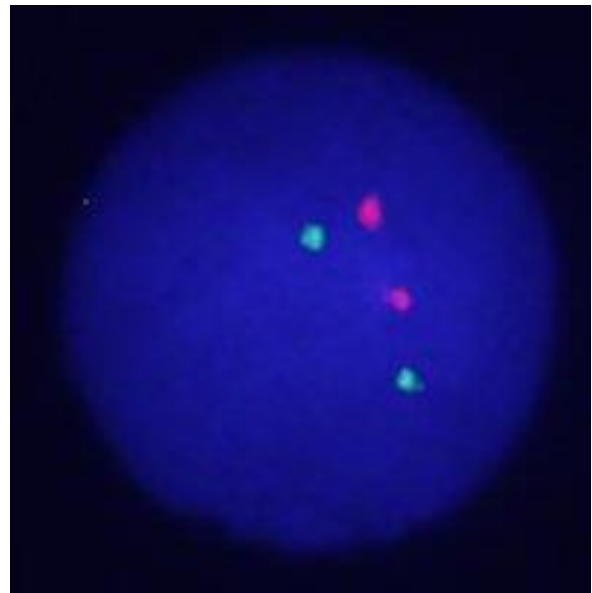
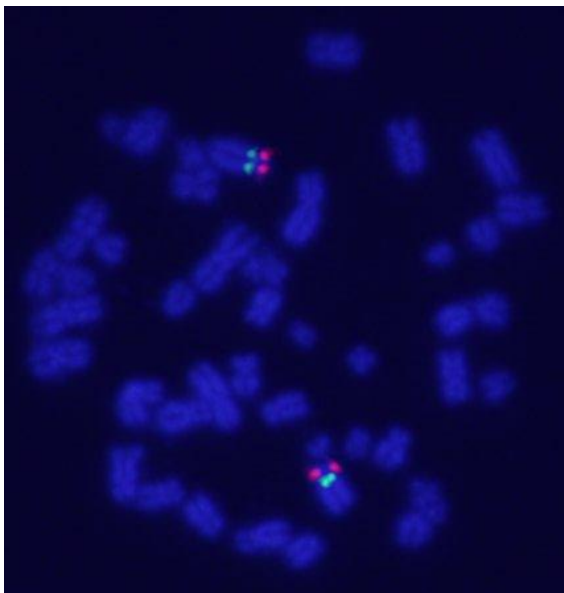
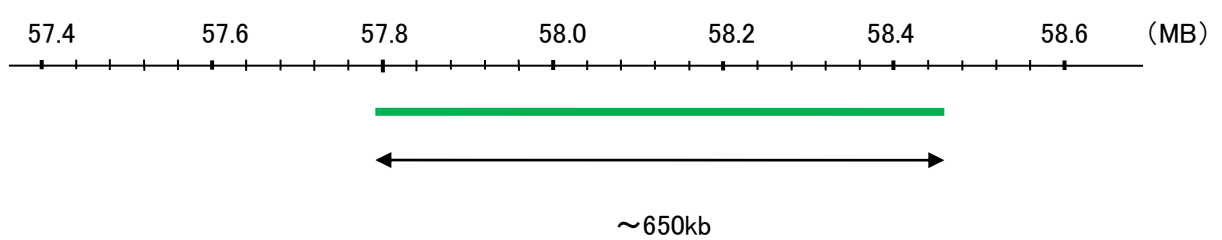
CEN4q

Probe Size Approximately 650kb
Fluorophore FITC
Location 4q13

PPARGC1A



CEN4q



representative images of normal human cell (lymphocyte) stain with the dual color FISH probe. The left image is chromosomes at metaphase, and the right image is an interphase nucleus