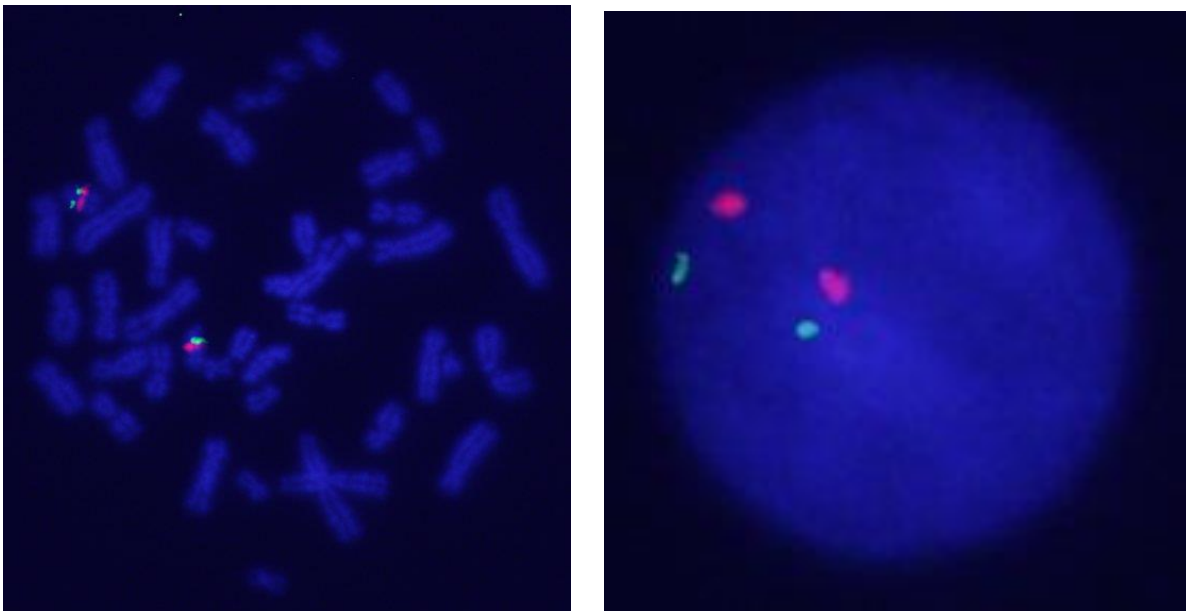
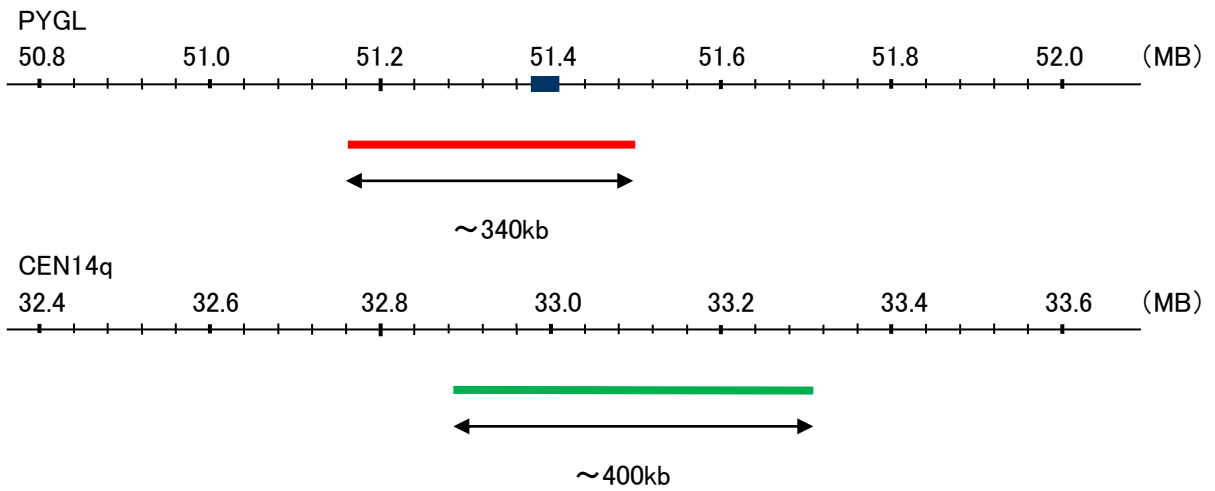


Probe PYGL/CEN14q Dual Color FISH Probe
Product No. GC261

PYGL
Probe Size Approximately 340kb
Fluorophore TexRed
Location 14q22.1
Also known as GSD6

CEN14q
Probe Size Approximately 400kb
Fluorophore FITC
Location 14q12



representative images of normal human cell (lymphocyte) stain with the dual color FISH probe. The left image is chromosomes at metaphase, and the right image is an interphase nucleus