

Probe DMD/CENXp Dual Color FISH Probe
Product No. GC262

DMD

Probe Size Approximately 410kb

Fluorophore TexRed

Location Xp21.2-p21.1

Also known as BMD; CMD3B; MRX85; DXS142; DXS164; DXS206; DXS230; DXS239; DXS268; DXS269; DXS270; DXS272

CENXp

Probe Size Approximately 550kb

Fluorophore FITC

Location Xp11.22

DMD

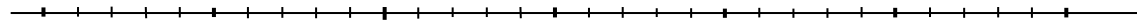
32.6 32.8 33.0 33.2 33.4 33.6 33.8 (MB)



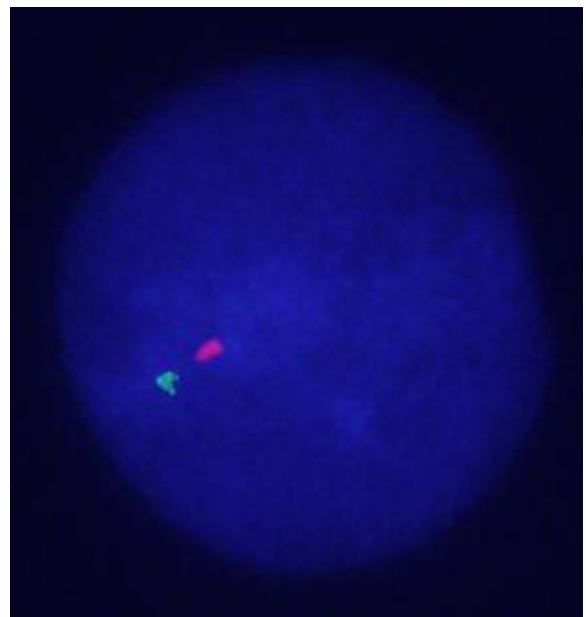
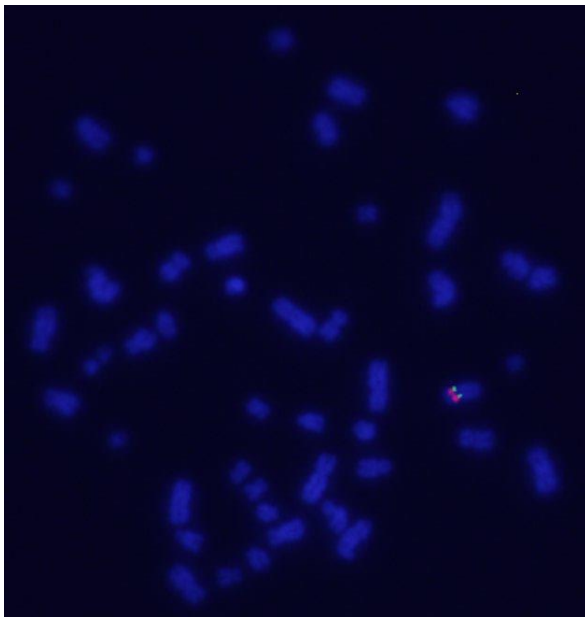
~410kb

CENXp

48.8 49.0 49.2 49.4 49.6 49.8 50.0 (MB)



~550kb



representative images of normal human cell (lymphocyte) stain with the dual color FISH probe. The left image is chromosomes at metaphase, and the right image is an interphase nucleus