

Probe D13S319/CEN13q Dual Color FISH Probe
Product No. GC265

D13S319

Probe Size Approximately 170kb
Fluorophore TexRed
Location 13q14

CEN13q

Probe Size Approximately 550kb
Fluorophore FITC
Location 13q12.11

D13S319

50.0 50.2 50.4 50.6 50.8 51.0 51.2 (MB)



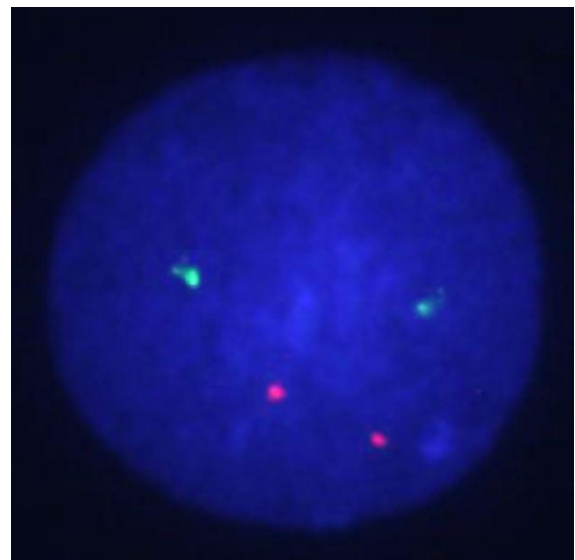
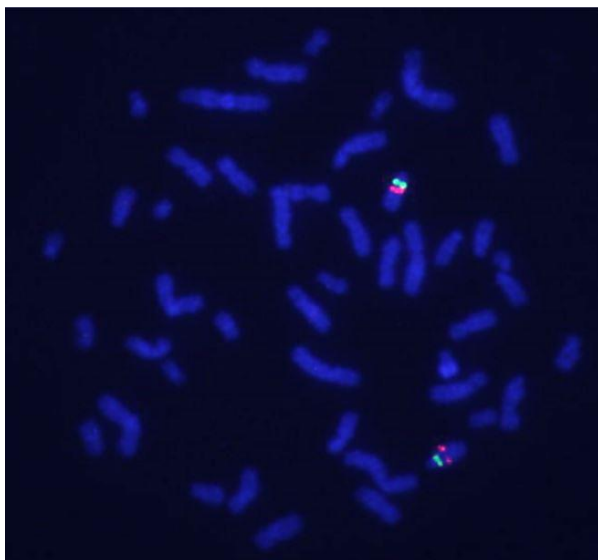
~170kb

CEN13q

27.4 27.6 27.8 28.0 28.2 28.4 28.6 (MB)



~550kb



representative images of normal human cell (lymphocyte) stain with the dual color FISH probe. The left image is chromosomes at metaphase, and the right image is an interphase nucleus