

Probe GLI1/CEN12p Dual Color FISH Probe
Product No. GC249

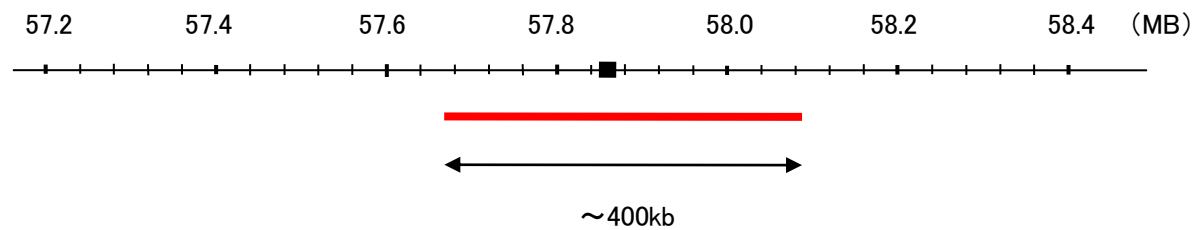
GLI1

Probe Size Approximately 400kb
Fluorophore TexRed
Location 12q13.3
Also known as GLI; PPD1; PAPA8

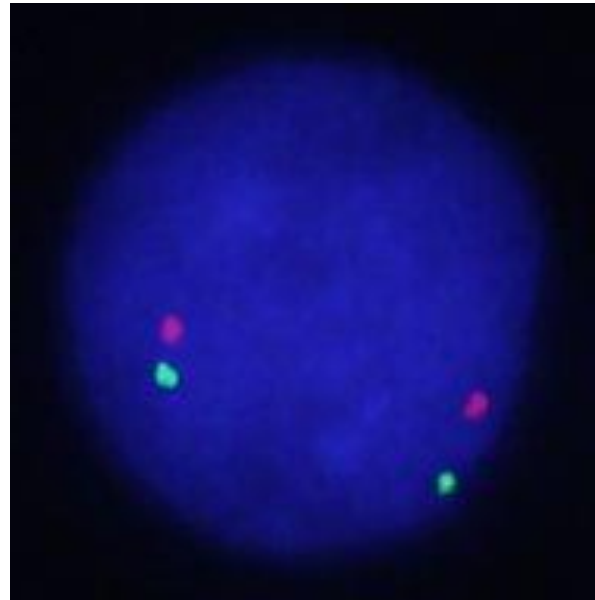
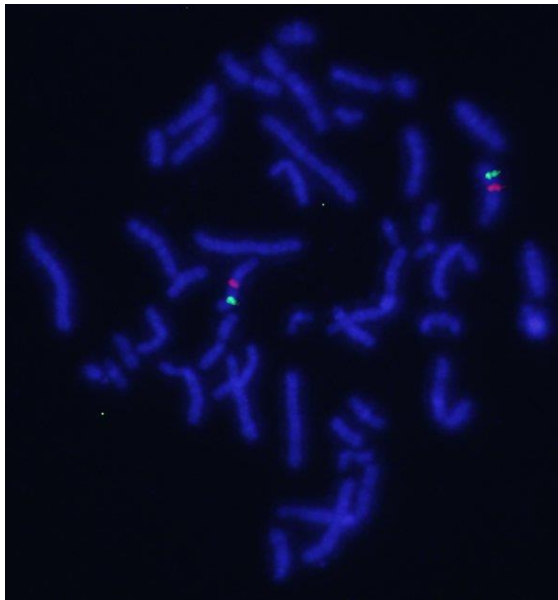
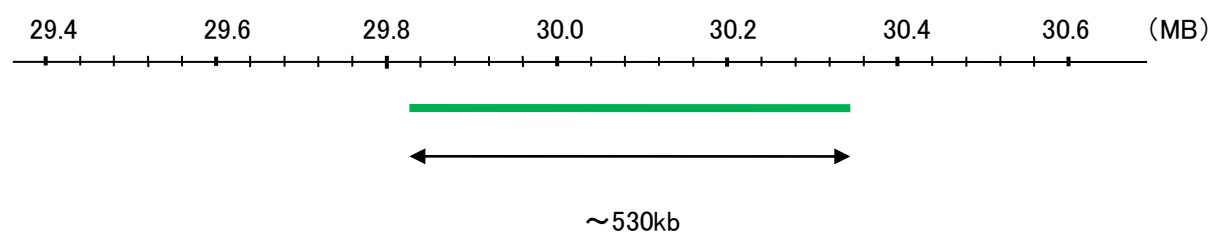
CEN12p

Probe Size Approximately 530kb
Fluorophore FITC
Location 12p11.22

GLI1



CEN12p



representative images of normal human cell (lymphocyte) stain with the dual color FISH probe. The left image is chromosomes at metaphase, and the right image is an interphase nucleus.