

Probe PTEN/CEN10p Dual Color FISH Probe
Product No. GC019

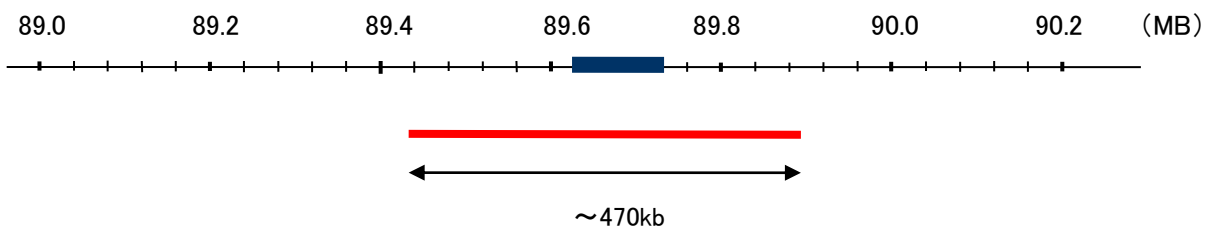
PTEN

Probe Size Approximately 470kb
Fluorophore TexRed
Location 10q23
Also known as BZS; DEC; CWS1; GLM2; MHAM; TEP1; MMAC1; PTEN1; 10q23del

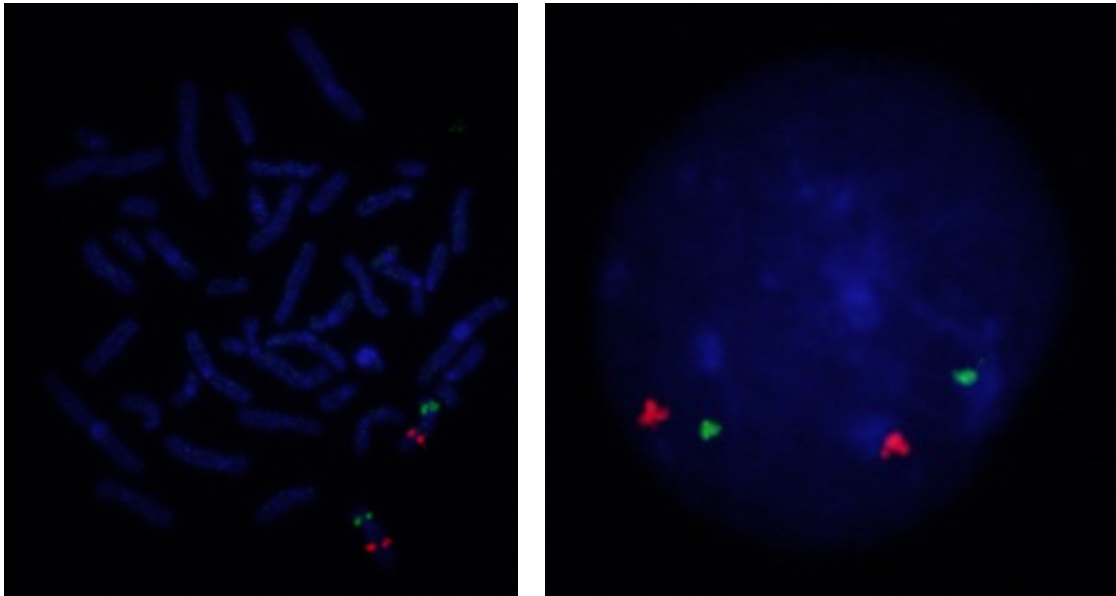
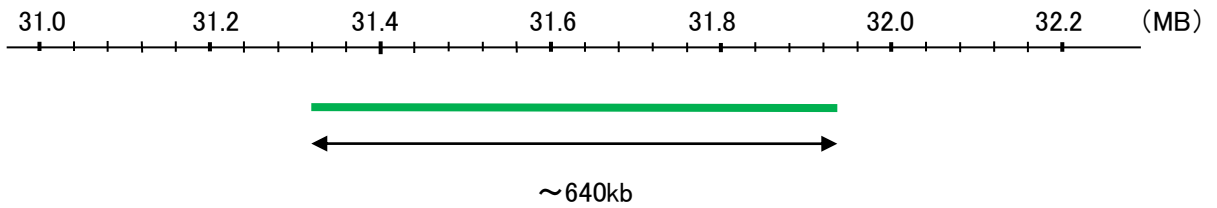
CEN10p

Probe Size Approximately 640kb
Fluorophore FITC
Location 10p11.22

PTEN



CEN10p



Representative images of normal human cell (lymphocyte) stain with the dual color FISH probe. The left image is chromosomes at metaphase, and the right image is an interphase nucleus.