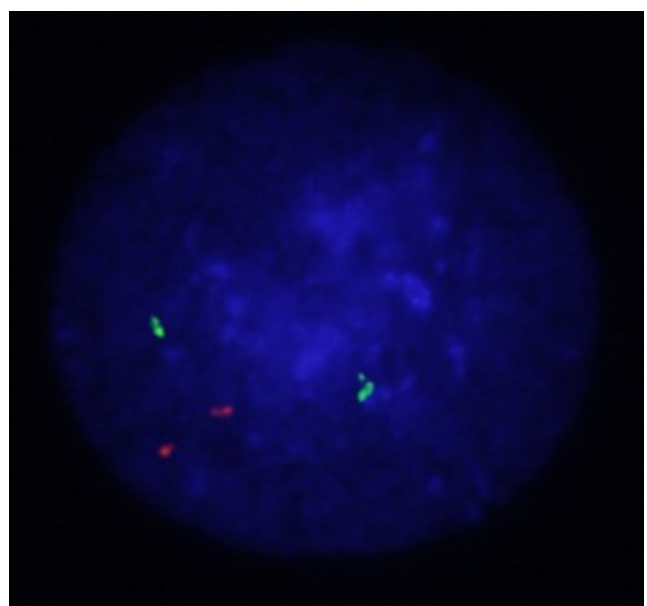
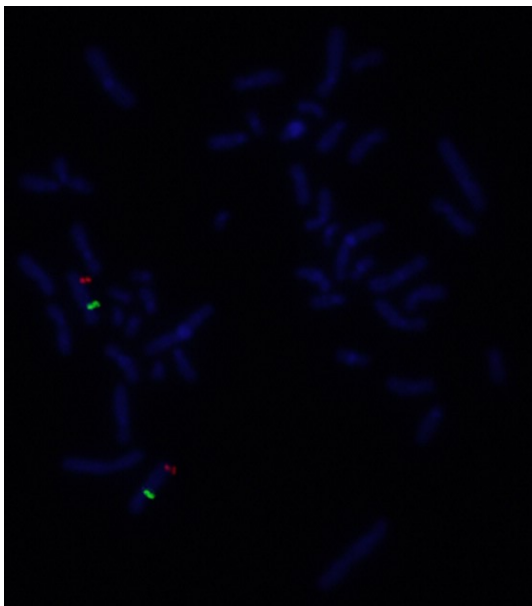
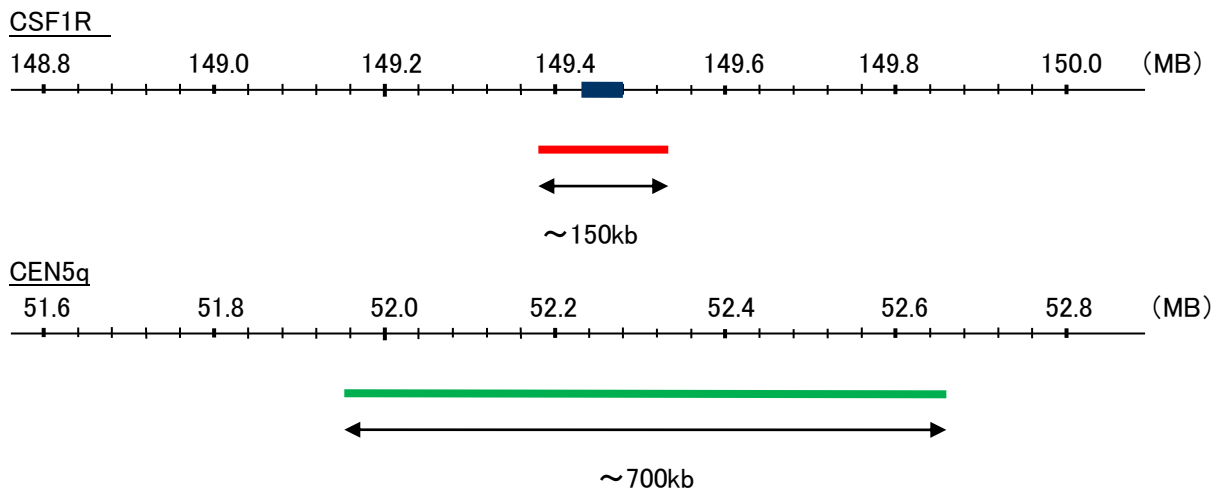


Probe CSF1R/CEN5q Dual Color FISH Probe
Product No. GC084

CSF1R
Probe Size Approximately 150kb
Fluorophore TexRed
Location 5q32
Also known as FMS; CSFR; FIM2; HDLS; C-FMS; CD115; CSF-1R; M-CSF-R

CEN5q
Probe Size Approximately 700kb
Fluorophore FITC
Location 5q11.2



Representative images of normal human cell (lymphocyte) stain with the dual color FISH probe. The left image is chromosomes at metaphase, and the right image is an interphase nucleus.