

Probe 5-Color FISH Probe (CEN13q, CEN16q, CEN18q, CEN21q, CEN22q)  
Product No. CM5002

CEN13q

Probe Size Approximately 550kb  
Fluorophore TexRed  
Location 13q12.11

CEN16q

Probe Size Approximately 700kb  
Fluorophore DEAC  
Location 16q12.1

CEN18q

Probe Size Approximately 660kb  
Fluorophore Cy5  
Location 18q11.2

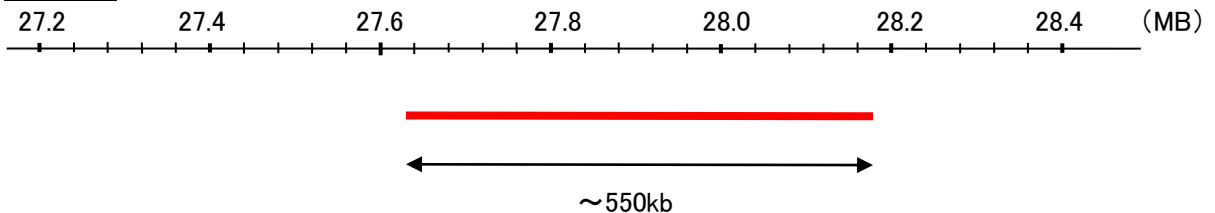
CEN21q (DYRK1A Gene /Down syndrome critical region)

Probe Size Approximately 550kb  
Fluorophore FITC  
Location 21q22.13

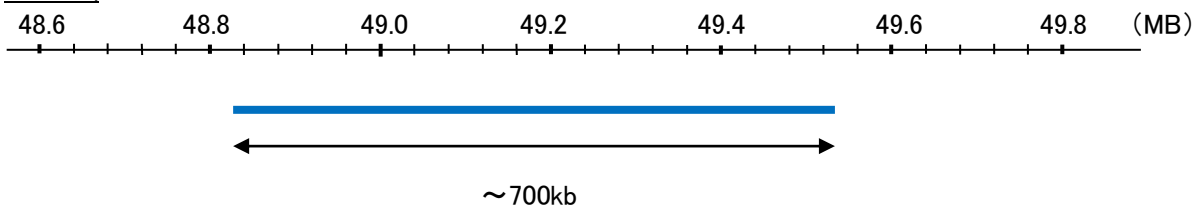
CEN22q

Probe Size Approximately 450kb  
Fluorophore R6G  
Location 22q11.22

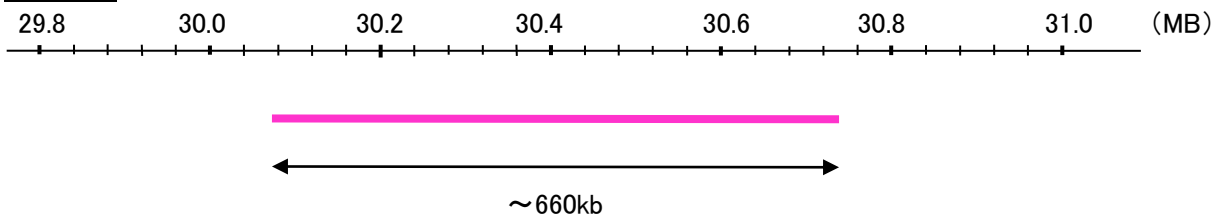
CEN13q



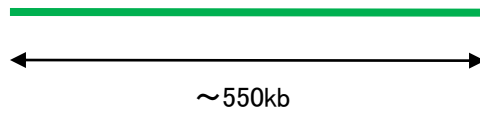
CEN16q



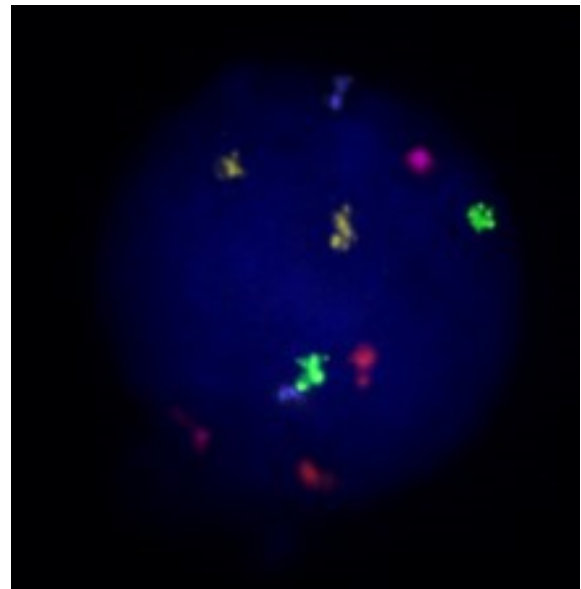
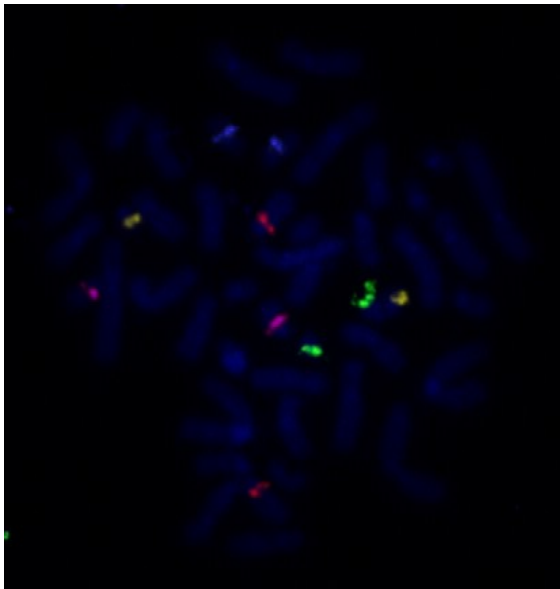
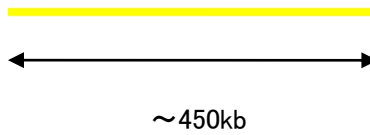
CEN18q



GEN21q (DYRK1A Gene /Down syndrome critical region)  
38.2 38.4 38.6 38.8 39.0 39.2 39.4 (MB)



GEN22q  
25.0 25.2 25.4 25.6 25.8 26.0 26.2 (MB)



Representative images of normal human cell (lymphocyte) stain with the dual color FISH probe. The left image is chromosomes at metaphase, and the right image is an interphase nucleus.