

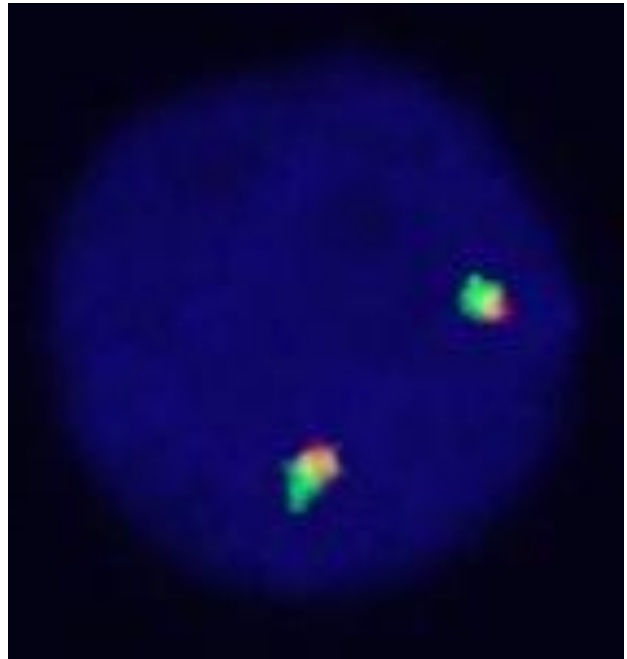
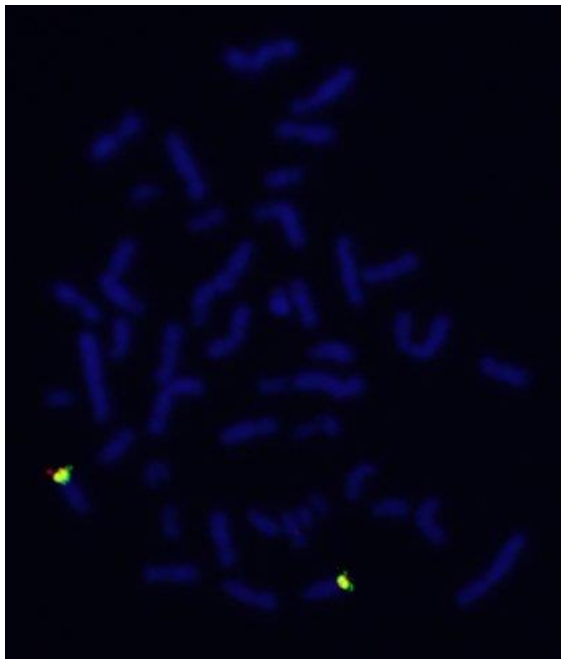
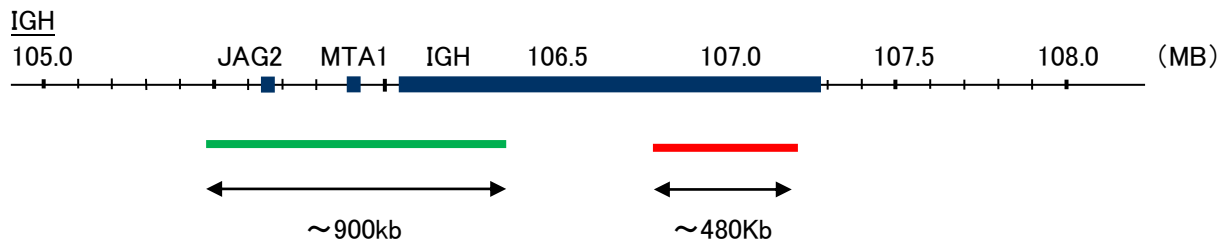
Probe IGH Split Dual Color FISH Probe
Product No SP069

IGH

Fluorophore TexRed, FITC

Location 14q32

Also known as IGD1; IGH@; IGHJ; IGHV; IGHD@; IGHJ@; IGHV@; IGH.1@; IGHDY1



Representative images of normal human cell (lymphocyte) stain with the dual color FISH probe. The left image is chromosomes at metaphase, and the right image is an interphase nucleus.