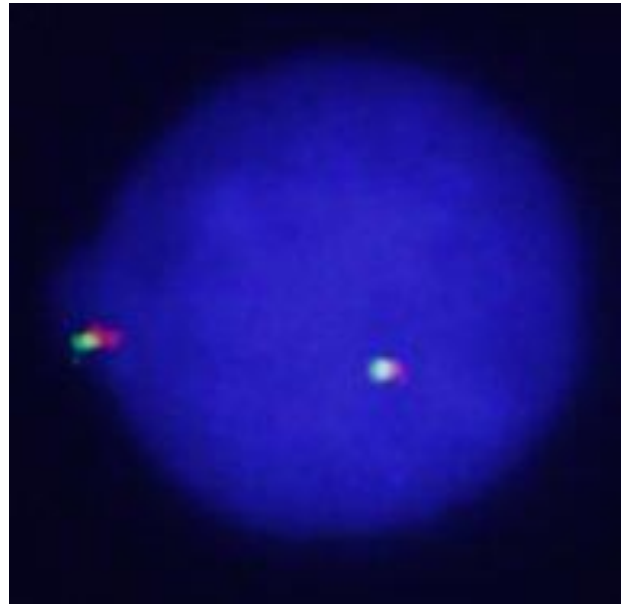
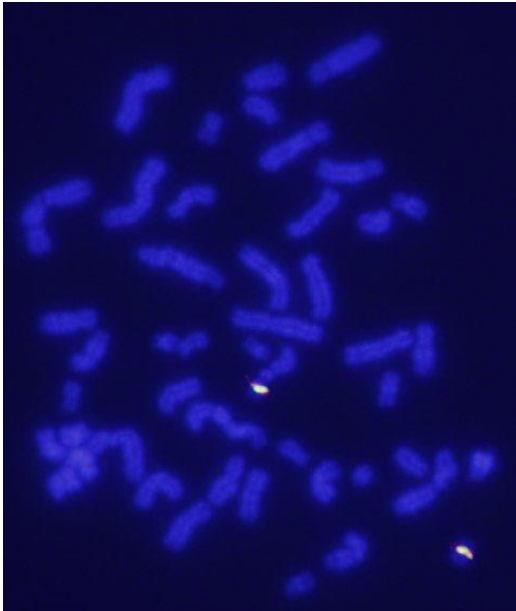
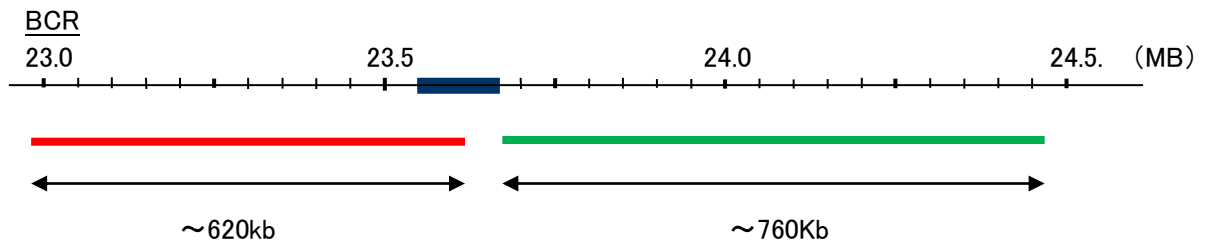


Probe BCR Split Dual Color FISH Probe
Product No. SP129

BCR
Fluorophore TexRed, FITC
Location 22q11.23
Also known as ALL; CML; PHL; BCR1; D22S11; D22S662



Representative images of normal human cell (lymphocyte) stain with the dual color FISH probe. The left image is chromosomes at metaphase, and the right image is an interphase nucleus.