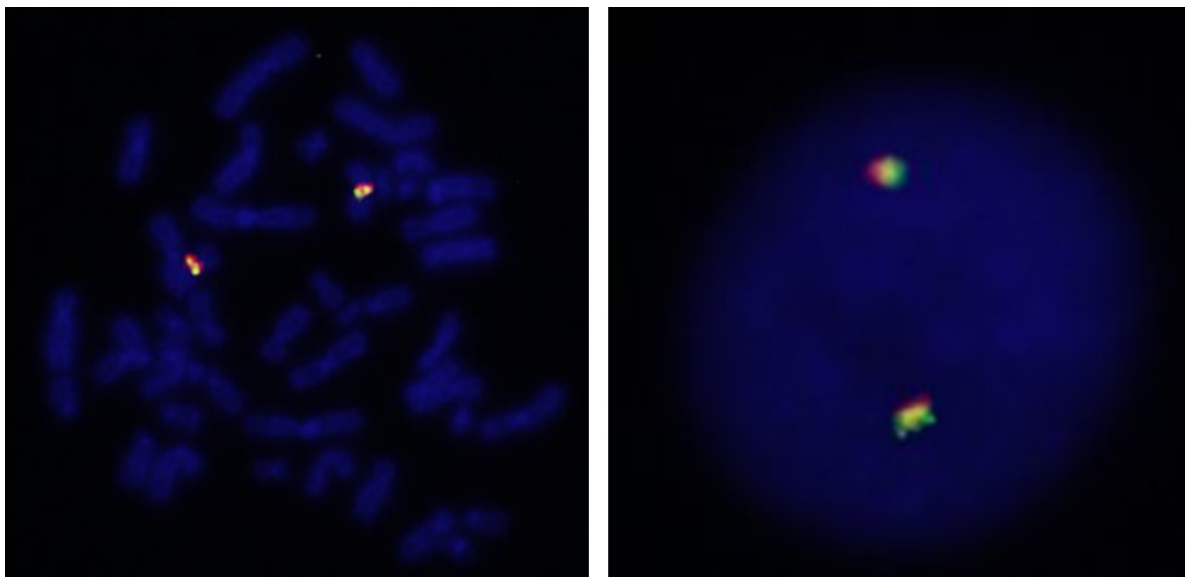
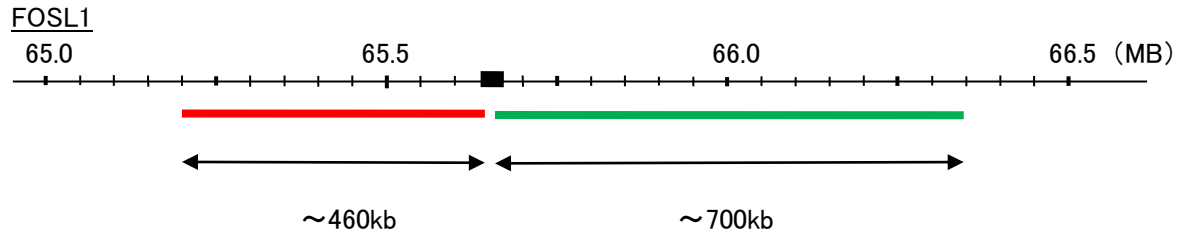


Probe FOSL1 Split Dual Color FISH Probe
Product No. SP040

FOSL1
Fluorophore TexRed, FITC
Location 11q13
Also known as FRA; FRA1; fra-1



Representative images of normal human cell (lymphocyte) stain with the dual color FISH probe. The left image is chromosomes at metaphase, and the right image is an interphase nucleus.