

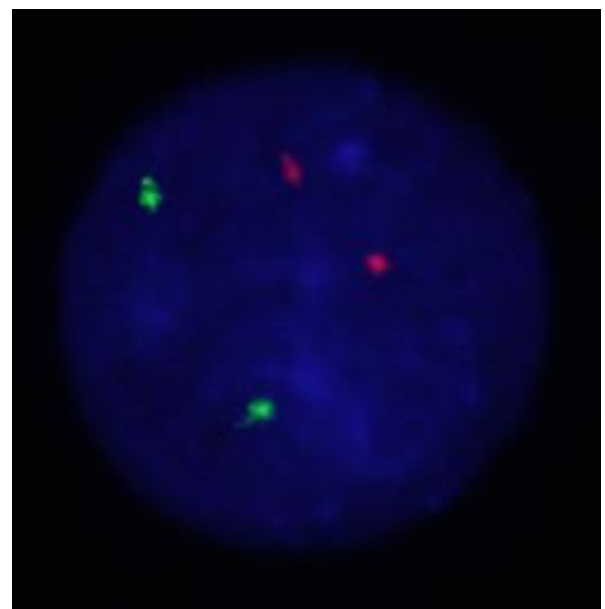
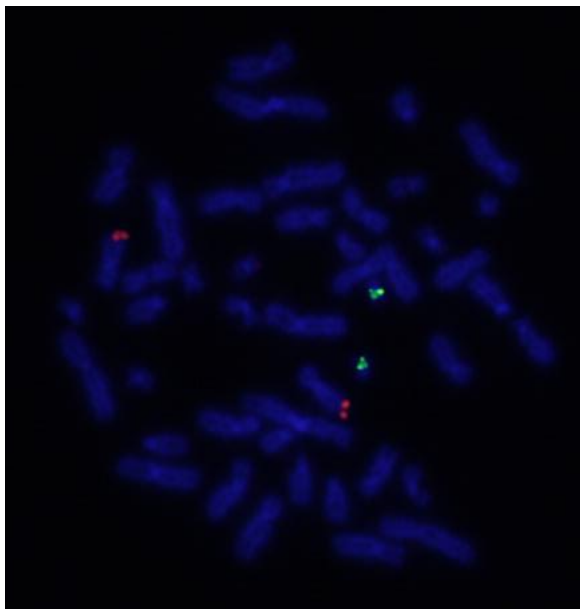
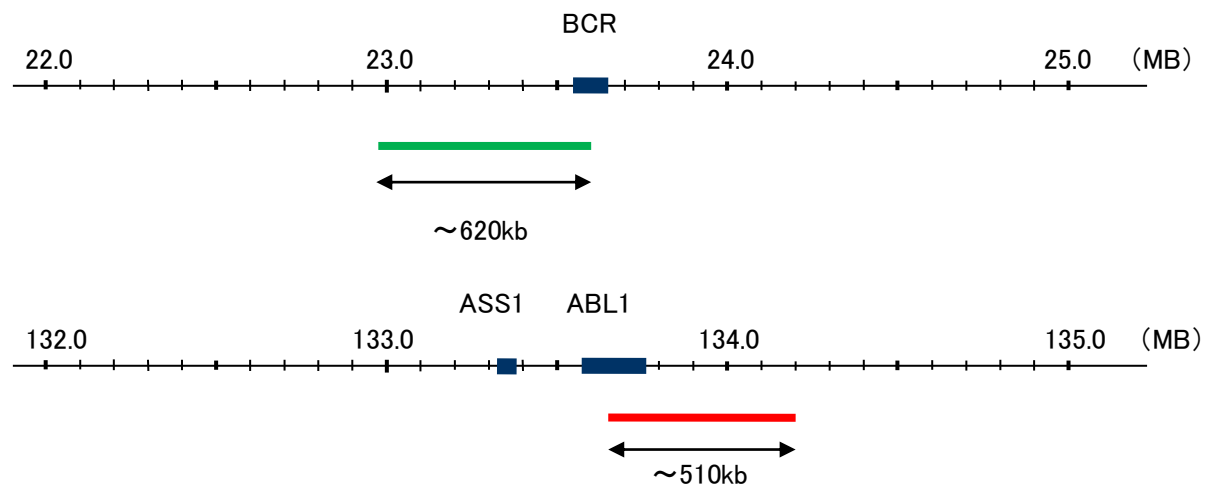
Probe BCR/ABL,SY Translocation Dual Color FISH Probe
Product No. TR002

BCR

Probe Size Approximately 620kb
Fluorophore FITC
Location 22q11.23
Also known as ALL; CML; PHL; BCR1; D22S11; D22S662

ABL

Probe Size Approximately 510kb
Fluorophore TexRed
Location 9q34.1
Also known as ABL1; JTK7; p150; c-ABL; v-abl; c-ABL1; bcr/abl



Representative images of normal human cell (lymphocyte) stain with the dual color FISH probe. The left image is chromosomes at metaphase, and the right image is an interphase nucleus.

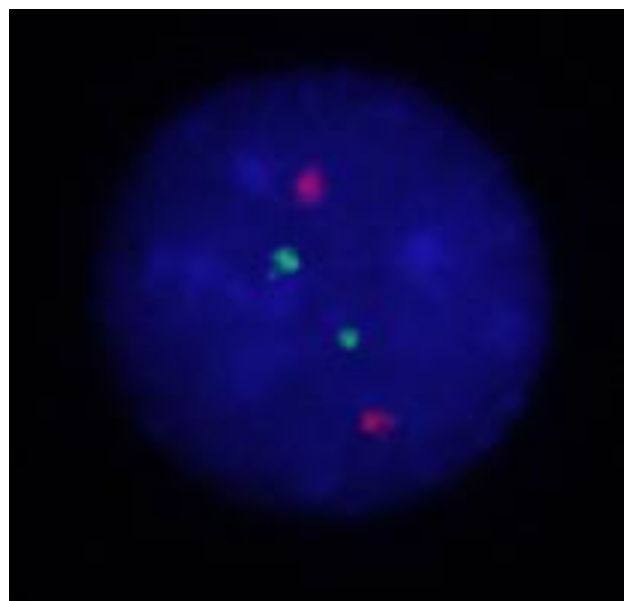
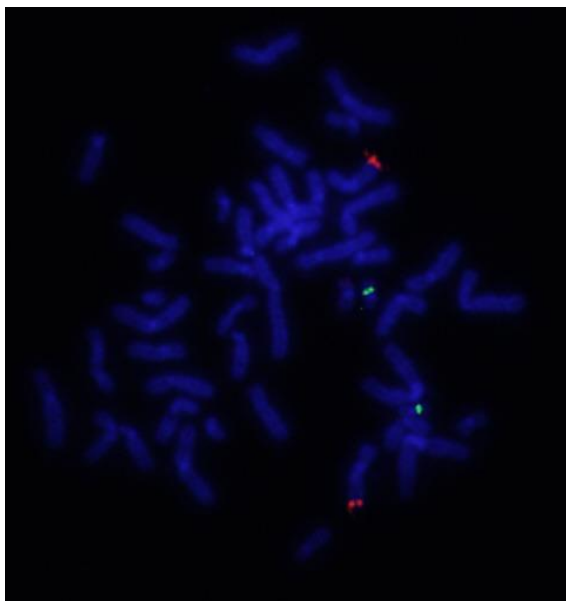
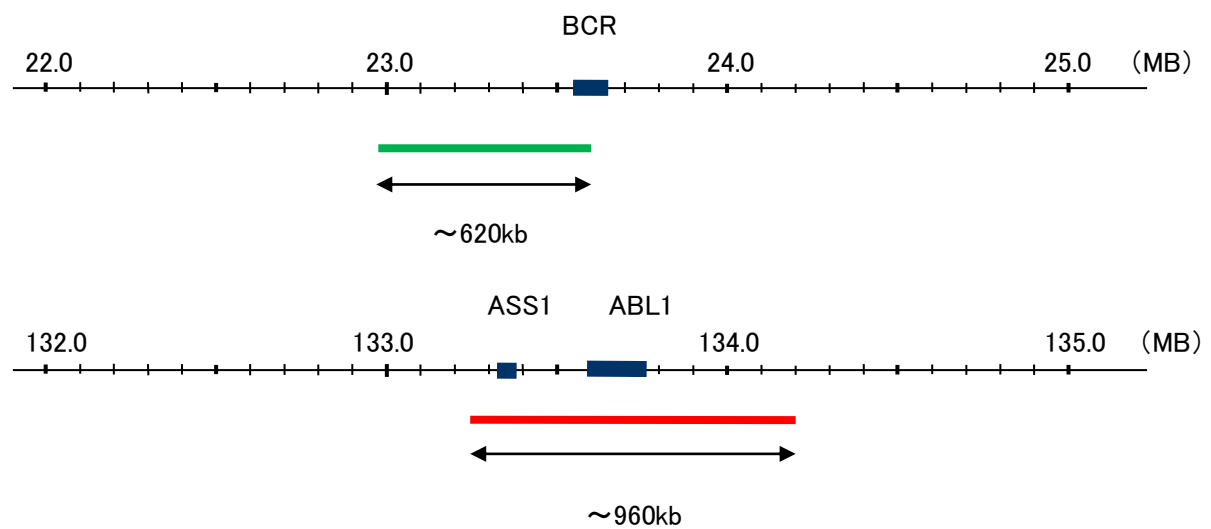
Probe BCR/ABL,ES Translocation Dual Color FISH Probe
Product No. TR003

BCR

Probe Size Approximately 620kb
Fluorophore FITC
Location 22q11.23
Also known as ALL; CML; PHL; BCR1; D22S11; D22S662

ABL

Probe Size Approximately 960kb
Fluorophore TexRed
Location 9q34.1
Also known as ABL1; JTK7; p150; c-ABL; v-abl; c-ABL1; bcr/abl



Representative images of normal human cell (lymphocyte) stain with the dual color FISH probe. The left image is chromosomes at metaphase, and the right image is an interphase nucleus.

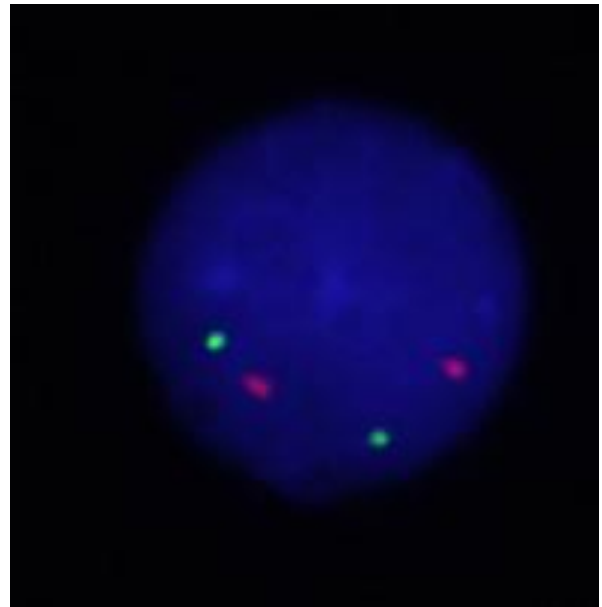
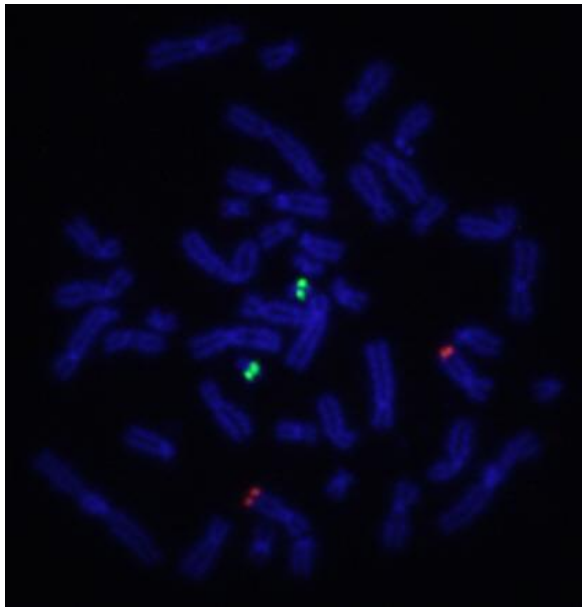
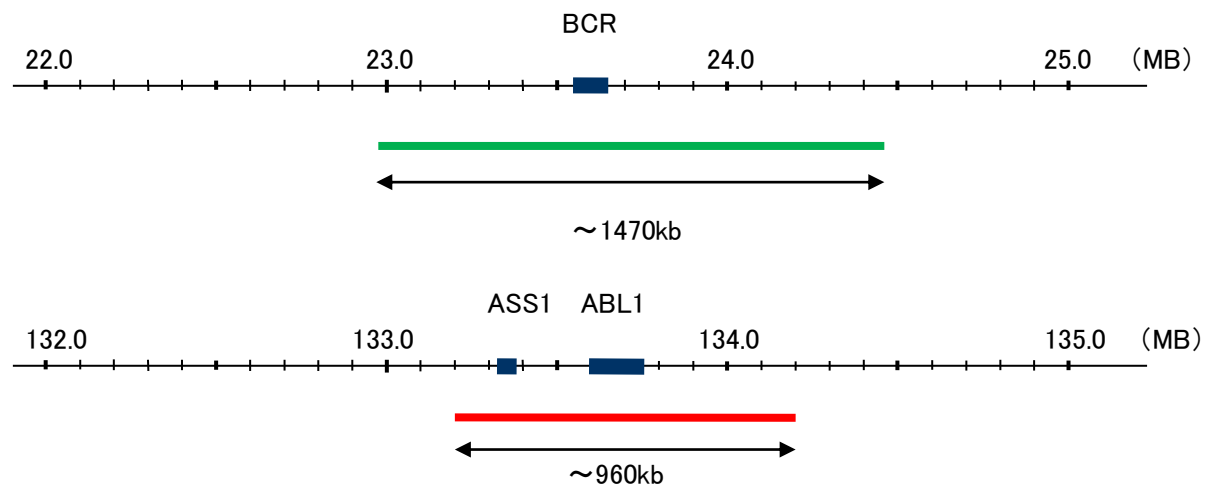
Probe BCR/ABL,DY Translocation Dual Color FISH Probe
Product No. TR004

BCR

Probe Size Approximately 1470kb
Fluorophore FITC
Location 22q11.23
Also known as ALL; CML; PHL; BCR1; D22S11; D22S662

ABL

Probe Size Approximately 960kb
Fluorophore TexRed
Location 9q34.1
Also known as ABL1; JTK7; p150; c-ABL; v-abl; c-ABL1; bcr/abl



Representative images of normal human cell (lymphocyte) stain with the dual color FISH probe. The left image is chromosomes at metaphase, and the right image is an interphase nucleus.