

Probe IGH/SOX5, DY Translocation Dual Color FISH Probe  
Product No. TR012

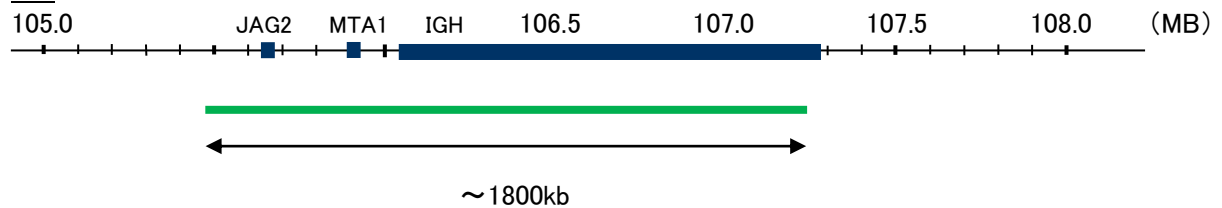
#### IGH

Probe Size Approximately 1800kb  
Fluorophore FITC  
Location 14q32  
Also known as IGD1; IGH@; IGHJ; IGHV; IGHD@; IGHJ@; IGHV@; IGH.1@; IGHDY1

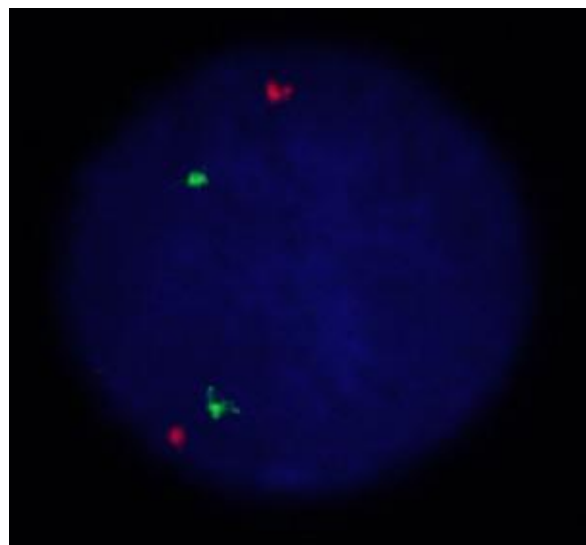
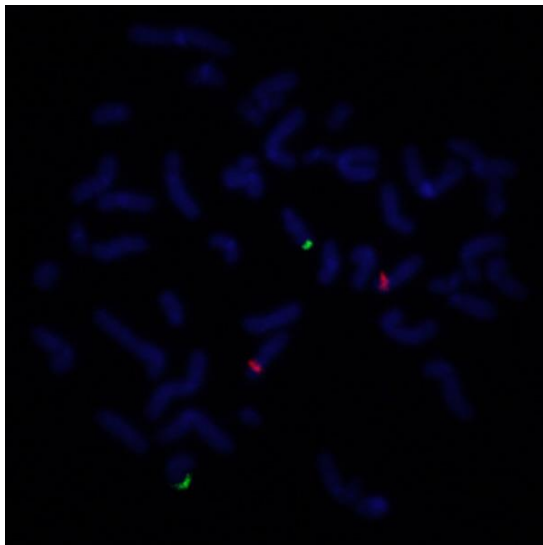
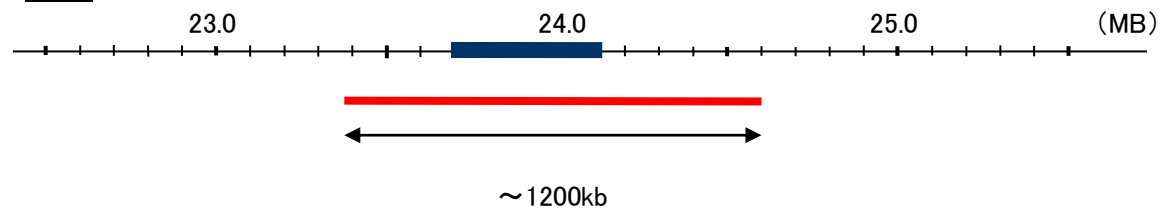
#### SOX5

Probe Size Approximately 1200kb  
Fluorophore TexRed  
Location 12p12.2  
Also known as L-SOX5; L-SOX5B; L-SOX5F

#### IGH



#### SOX5



Representative images of normal human cell (lymphocyte) stain with the dual color FISH probe. The left image is chromosomes at metaphase, and the right image is an interphase nucleus.