

Probe IGH/FOXP1, DY Translocation Dual Color FISH Probe  
Product No. TR017

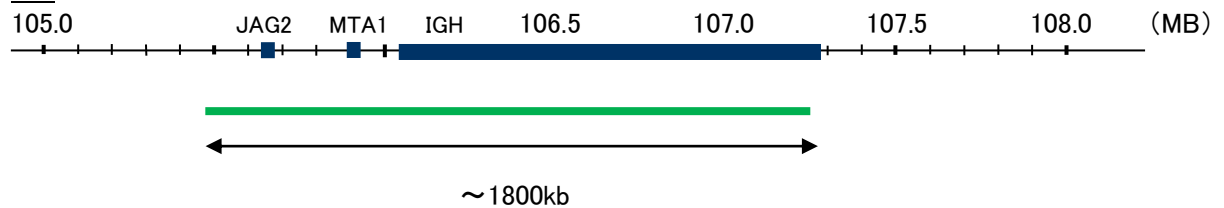
#### IGH

Probe Size Approximately 1800kb  
Fluorophore FITC  
Location 14q32  
Also known as IGD1; IGH@; IGHJ; IGHV; IGHD@; IGHJ@; IGHV@; IGH.1@; IGHDY1

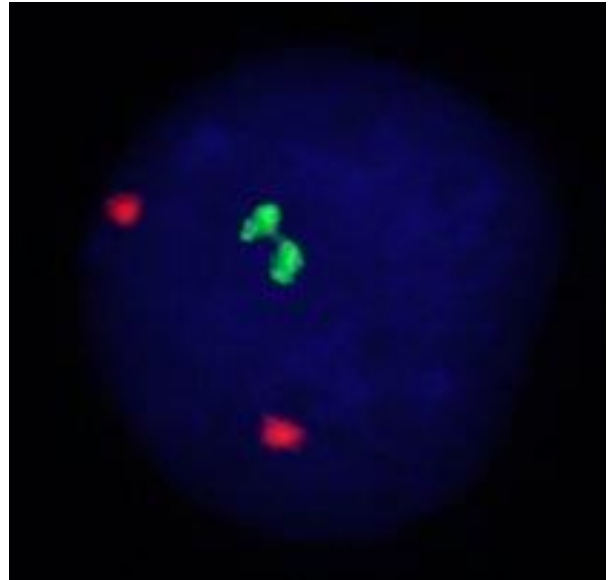
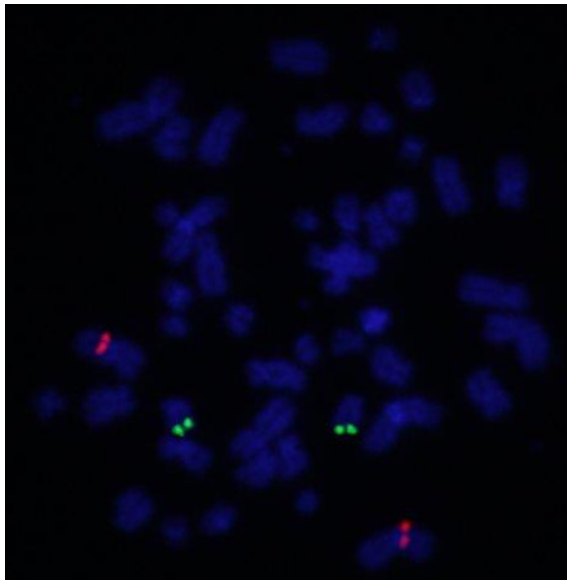
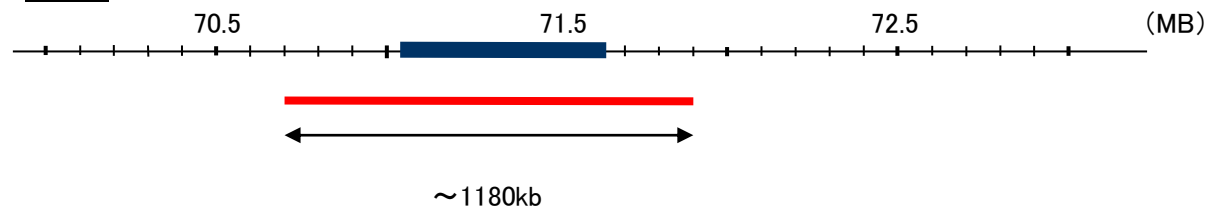
#### FOXP1

Probe Size Approximately 1180kb  
Fluorophore TexRed  
Location 3p14.1  
Also known as MFH; QRF1; 12CC4; hFKH1B; HSPC215

#### IGH



#### FOXP1



Representative images of normal human cell (lymphocyte) stain with the dual color FISH probe. The left image is chromosomes at metaphase, and the right image is an interphase nucleus.