

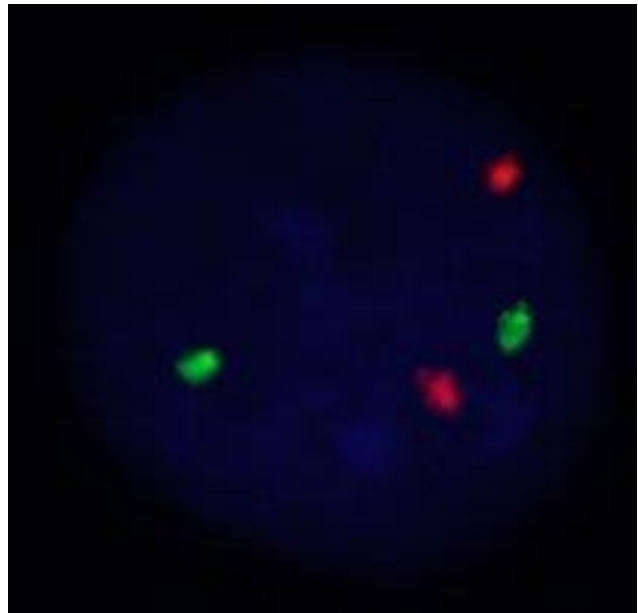
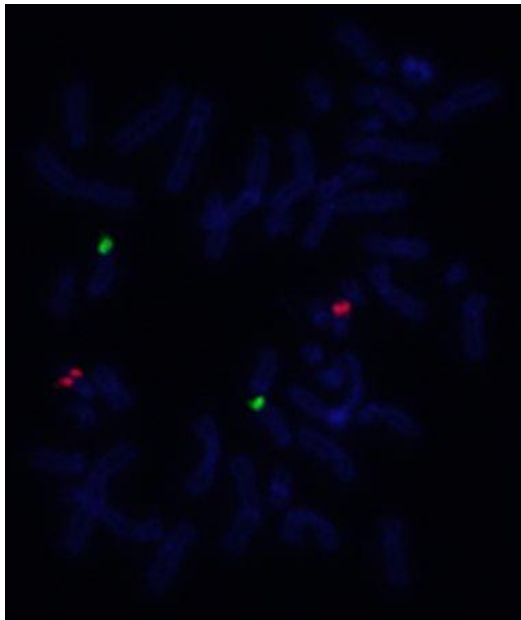
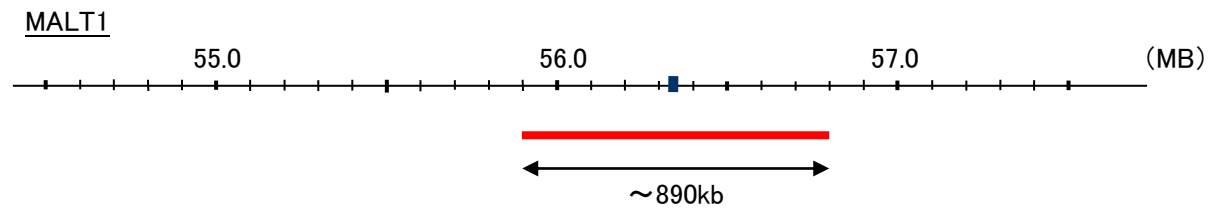
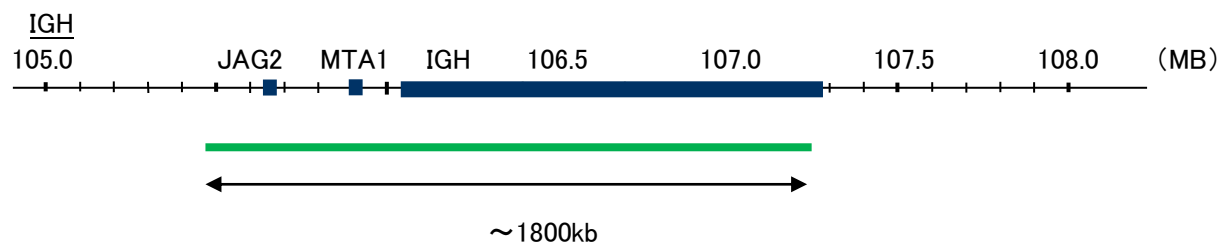
Probe IGH/MALT1, DY Translocation Dual Color FISH Probe  
Product No. TR025

#### IGH

Probe Size Approximately 1800kb  
Fluorophore FITC  
Location 14q32  
Also known as IGD1; IGH@; IGHJ; IGHV; IGHD@; IGHJ@; IGHV@; IGH.1@; IGHDY1

#### MALT1

Probe Size Approximately 890kb  
Fluorophore TexRed  
Location 18q21  
Also known as MLT; MLT1; IMD12; PCASP1



Representative images of normal human cell (lymphocyte) stain with the dual color FISH probe. The left image is chromosomes at metaphase, and the right image is an interphase nucleus.