

Probe CSF1/COL6A3, SY Translocation FISH Probe  
Product No. TR033

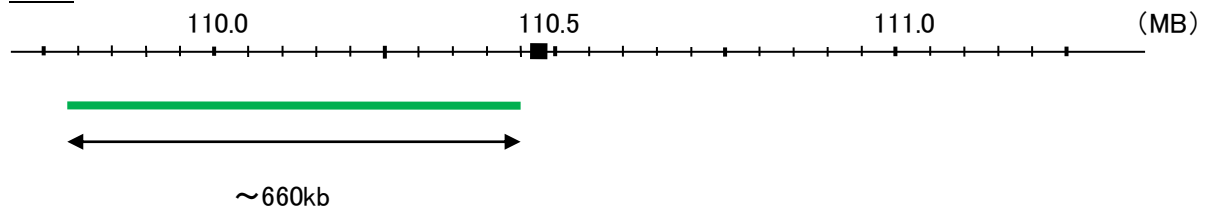
**CSF1**

Probe Size Approximately 660kb  
Fluorophore FITC  
Location 1p13.3  
Also known as MCSF; CSF-1

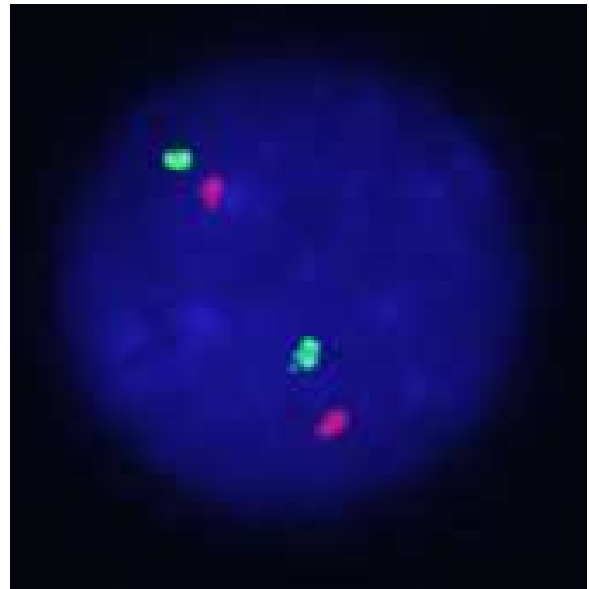
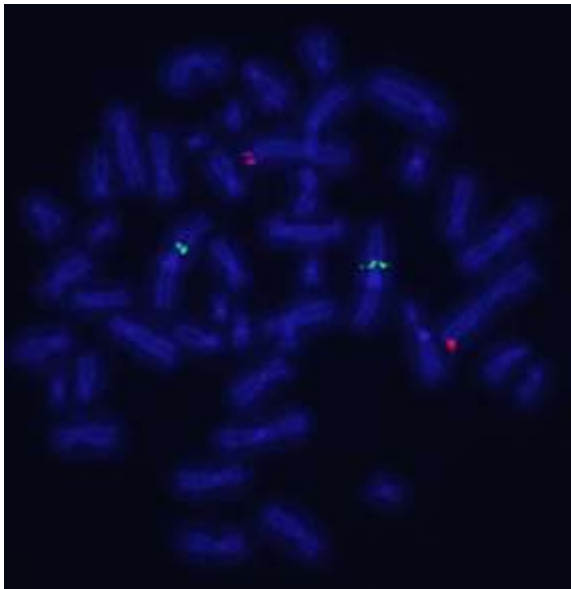
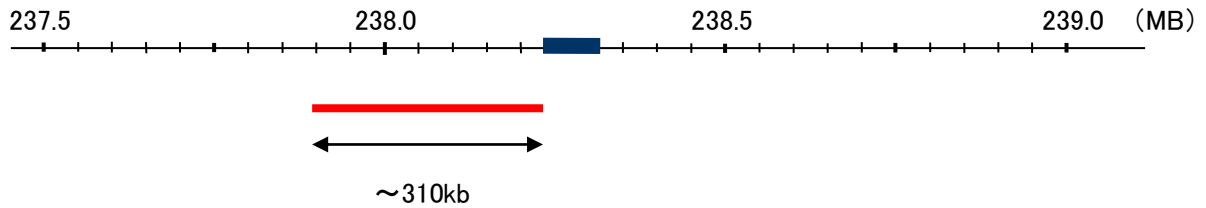
**COL6A3**

Probe Size Approximately 310kb  
Fluorophore TexRed  
Location 2q37.3  
Also known as DYT27; UCMD1; BTHLM1

CSF1



COL6A3



Representative images of normal human cell (lymphocyte) stain with the dual color FISH probe. The left image is chromosomes at metaphase, and the right image is an interphase nucleus.