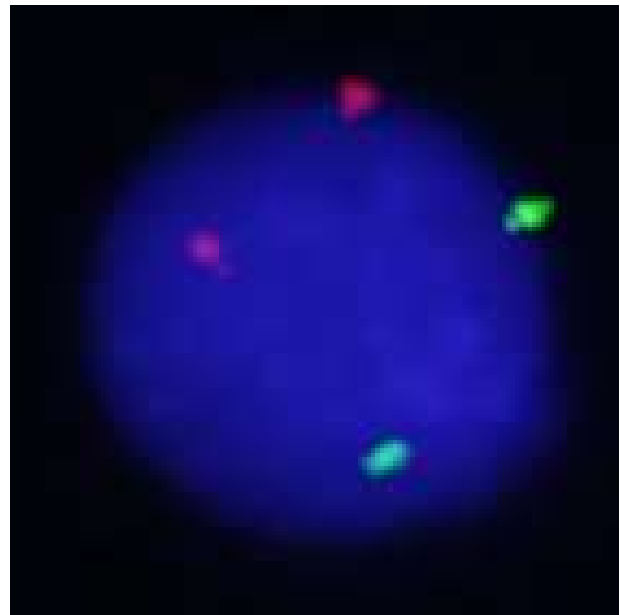
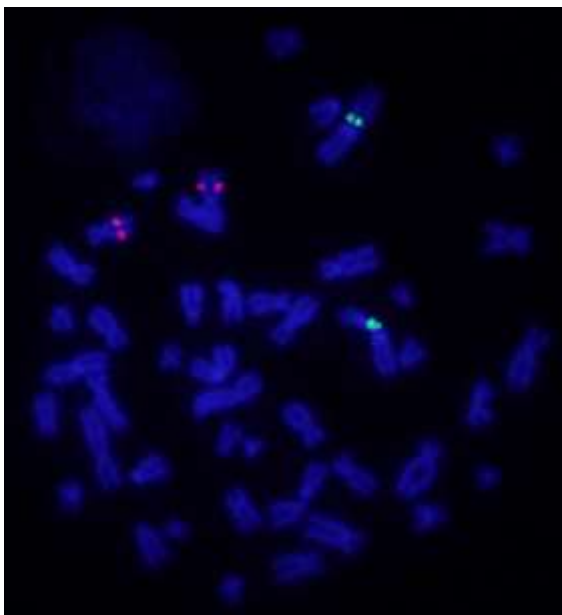
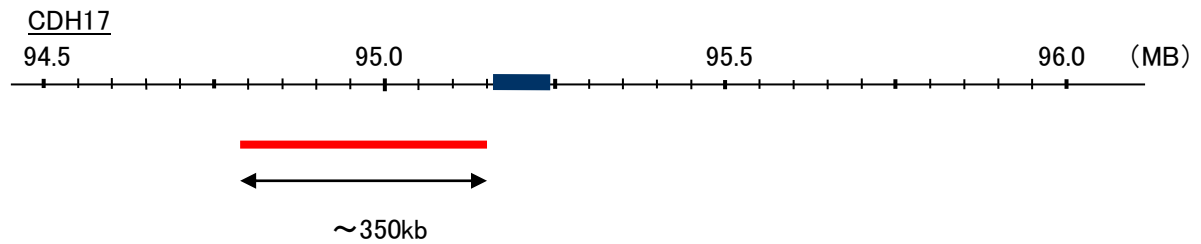
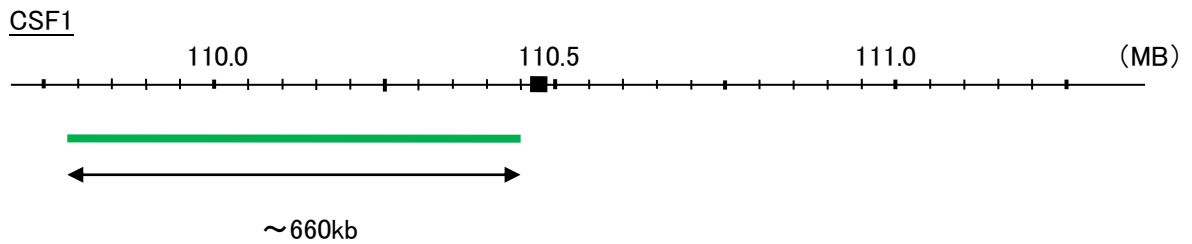


Probe CSF1/CDH17, SY Translocation FISH Probe
Product No. TR035

CSF1
Probe Size Approximately 660kb
Fluorophore FITC
Location 1p13.3
Also known as MCSF; CSF-1

CDH17
Probe Size Approximately 350kb
Fluorophore TexRed
Location 8q22.1
Also known as HPT1; CDH16; HPT-1



Representative images of normal human cell (lymphocyte) stain with the dual color FISH probe. The left image is chromosomes at metaphase, and the right image is an interphase nucleus.