

Probe ESR1/NCOA3, DY Translocation FISH Probe
Product No. TR045

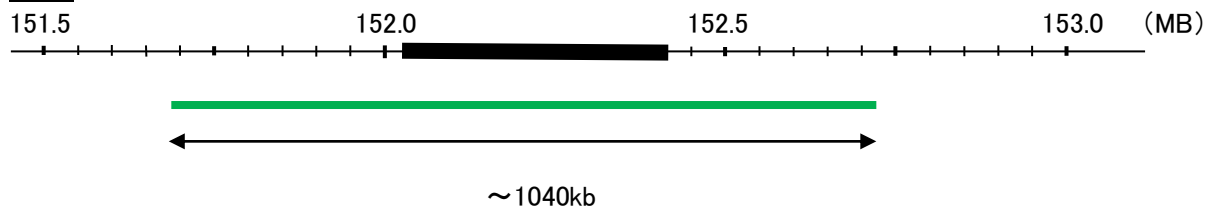
ESR1

Probe Size Approximately 1040 kb
Fluorophore FITC
Location 6q25.1–q25.2
Also known as ER; ESR; Era; ESRA; ESTRR; NR3A1

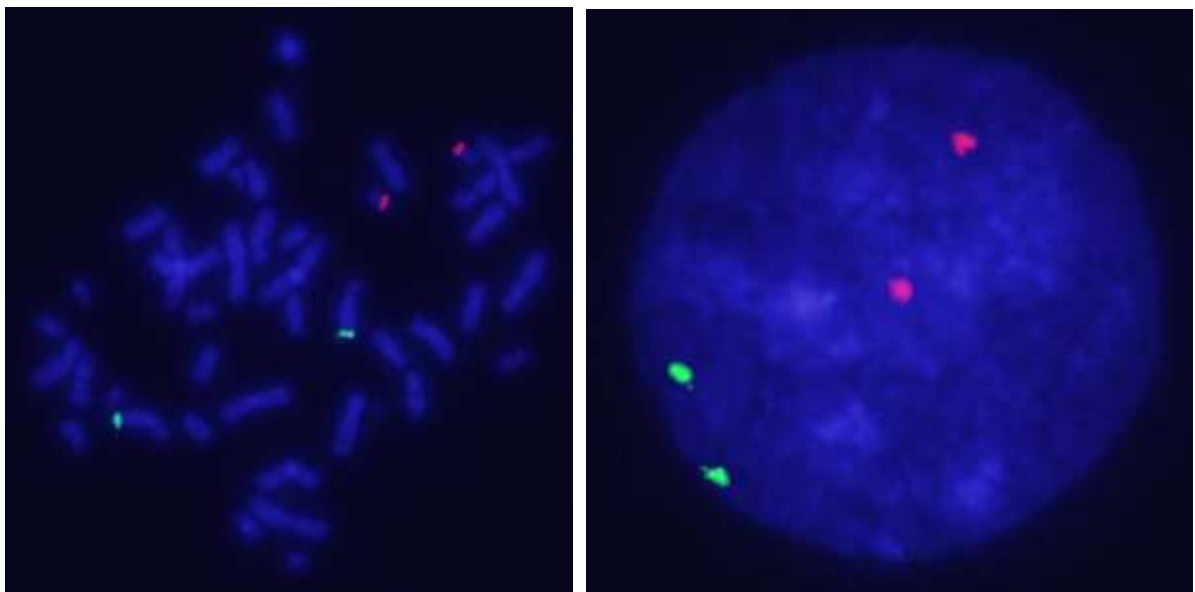
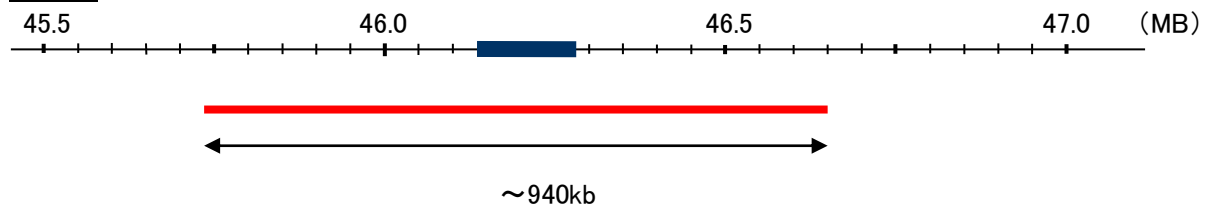
NCOA3

Probe Size Approximately 940kb
Fluorophore TexRed
Location 20q13.12
Also known as ACTR; AIB1; RAC3; SRC3; pCIP; AIB-1; CTG26; SRC-3; CAGH16; KAT13B; TNRC14; TNRC16; TRAM-1; bHLHe42

ESR1



NCOA3



Representative images of normal human cell (lymphocyte) stain with the dual color FISH probe. The left image is chromosomes at metaphase, and the right image is an interphase nucleus.