

Probe MIR143/NOTCH2, ES Translocation FISH Probe
Product No. TR047

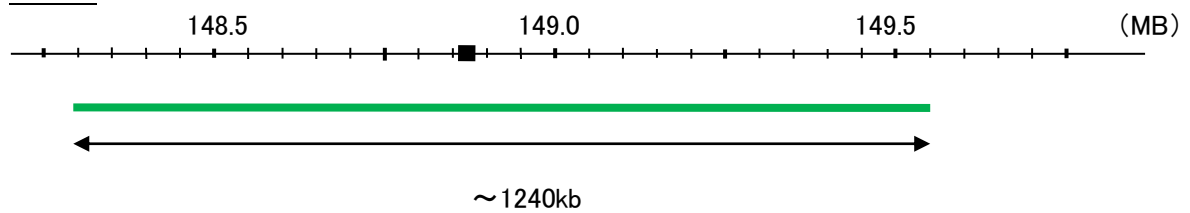
MIR143

Probe Size Approximately 1240kb
Fluorophore FITC
Location 5q32
Also known as MIRN143; mir-143

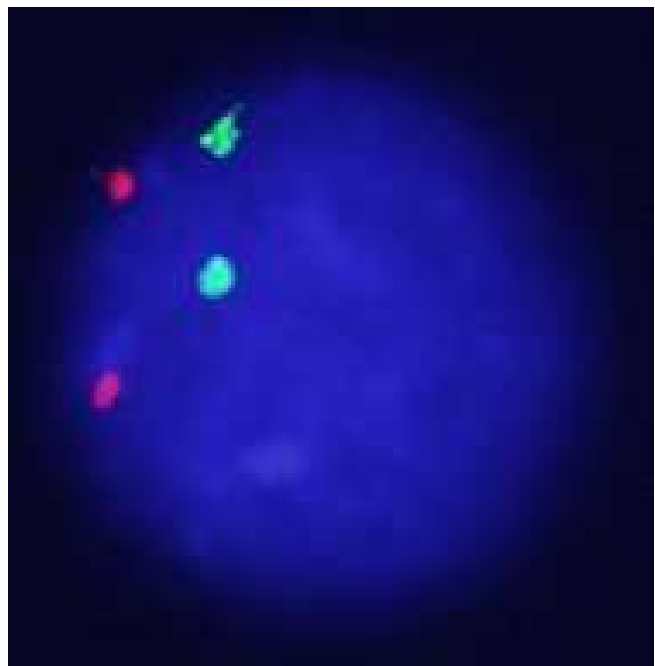
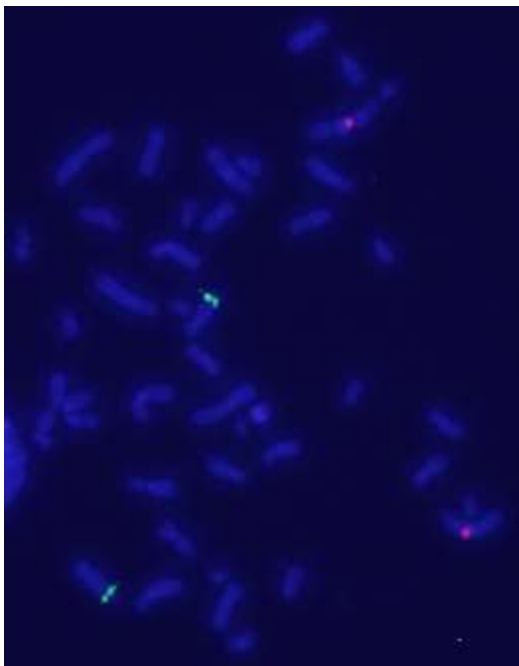
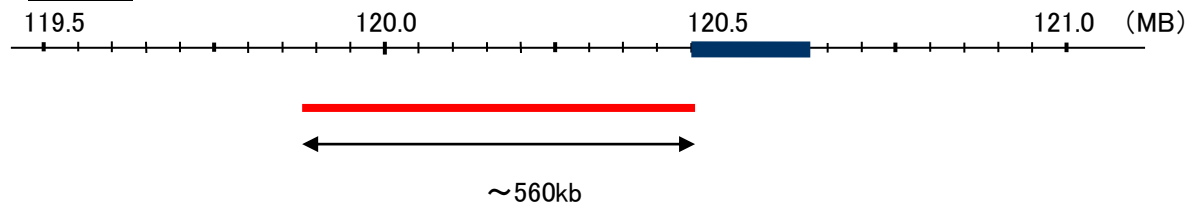
NOTCH2

Probe Size Approximately 430kb
Fluorophore TexRed
Location 1p12
Also known as hN2; AGS2; HJCYS

MIR143



NOTCH2



Representative images of normal human cell (lymphocyte) stain with the dual color FISH probe. The left image is chromosomes at metaphase, and the right image is an interphase nucleus.