

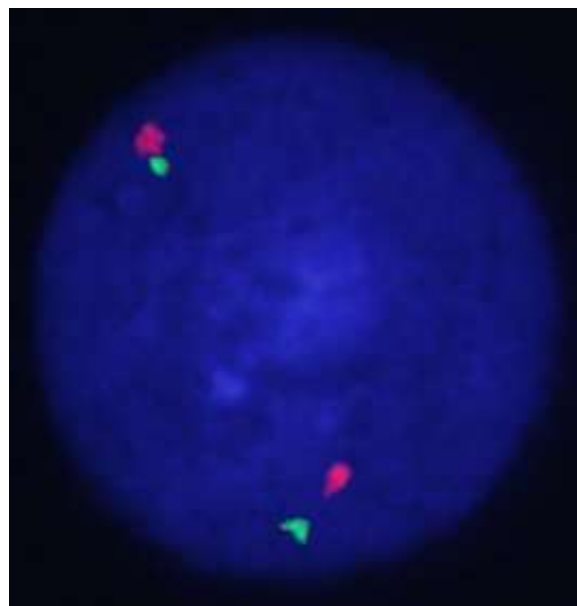
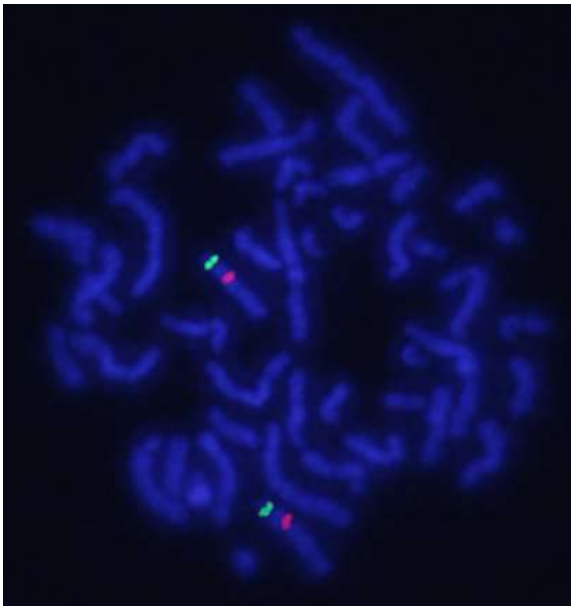
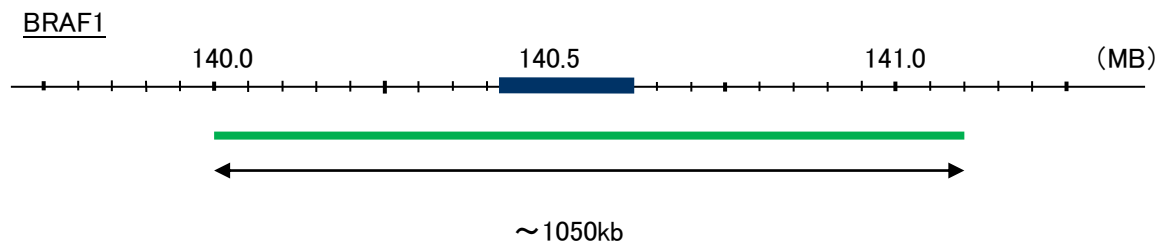
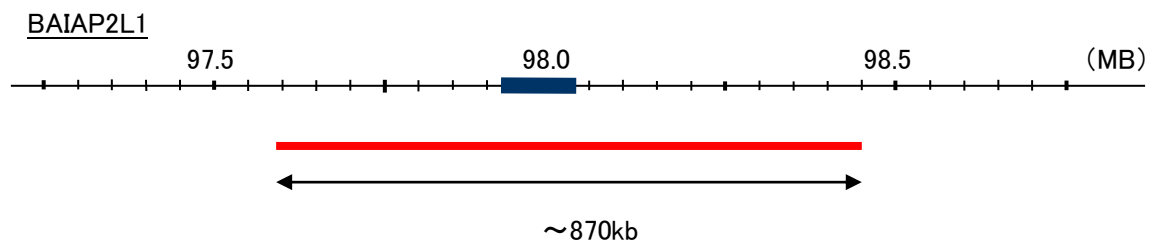
Probe BAIAP2L1/BRAF1, DY Translocation Dual Color FISH Probe
Product No. TR048

BAIAP2L1

Probe Size Approximately kb
Fluorophore TexRed
Location 7q21.3-22.1
Also known as IRTKS

BRAF1

Probe Size Approximately 1050kb
Fluorophore FITC
Location 7q34
Also known as NS7; B-raf; BRAF; RAFB1; B-RAF1



Representative images of normal human cell (lymphocyte) stain with the dual color FISH probe. The left image is chromosomes at metaphase, and the right image is an interphase nucleus.