

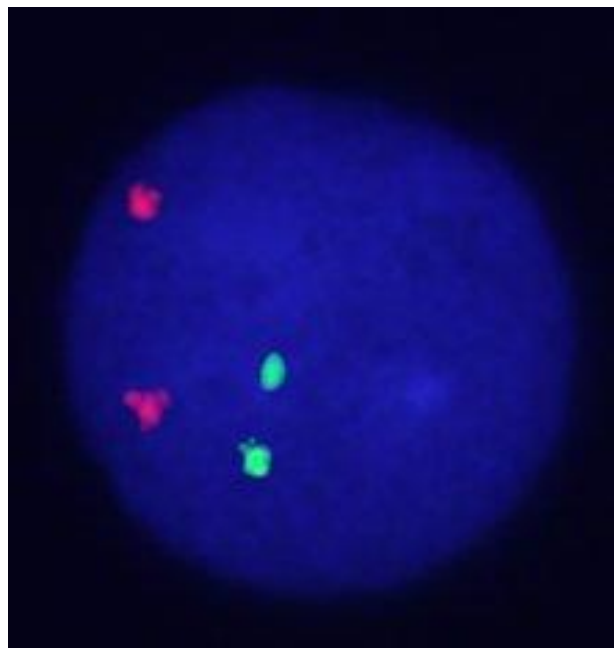
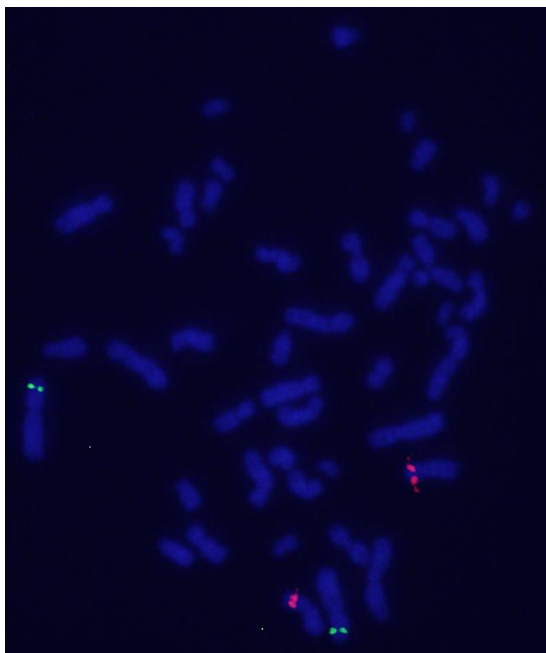
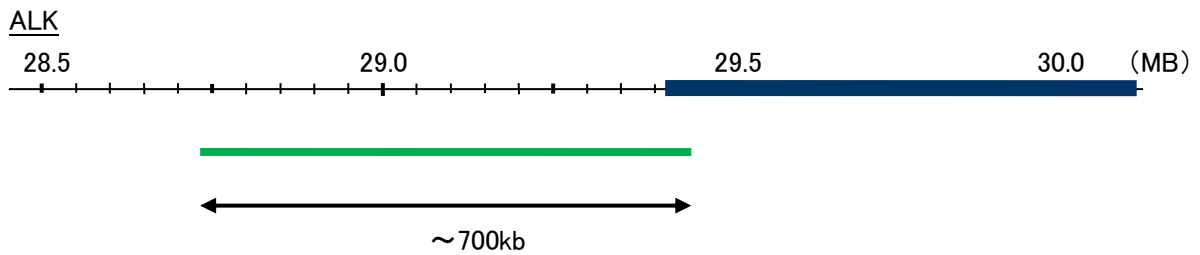
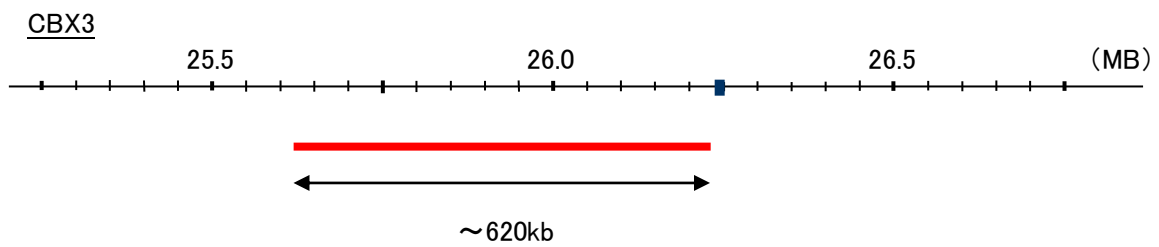
Probe CBX3/ALK, DY Translocation Dual Color FISH Probe
Product No. TR053

CBX3

Probe Size Approximately 620kb
Fluorophore TexRed
Location 7p15.2
Also known as HECH; HP1gamma; HP1-GAMMA; HP1Hs-gamma

ALK

Probe Size Approximately 700kb
Fluorophore FITC
Location 2p23
Also known as ALK1; CD246; NBLST3



Representative images of normal human cell (lymphocyte) stain with the dual color FISH probe. The left image is chromosomes at metaphase, and the right image is an interphase nucleus.