

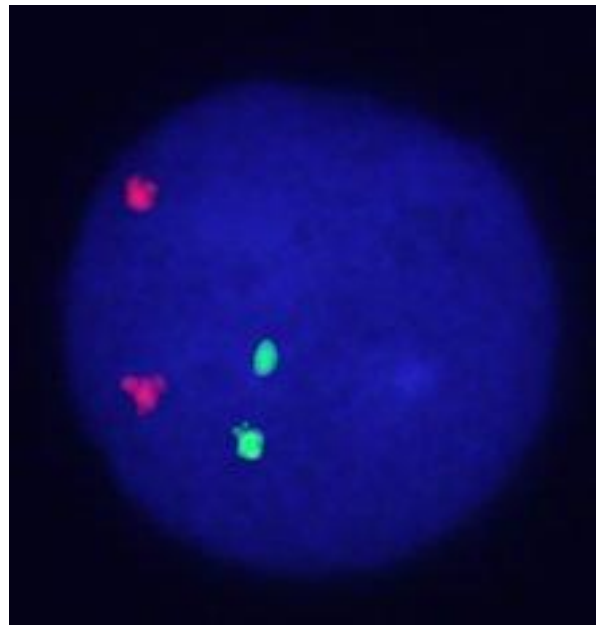
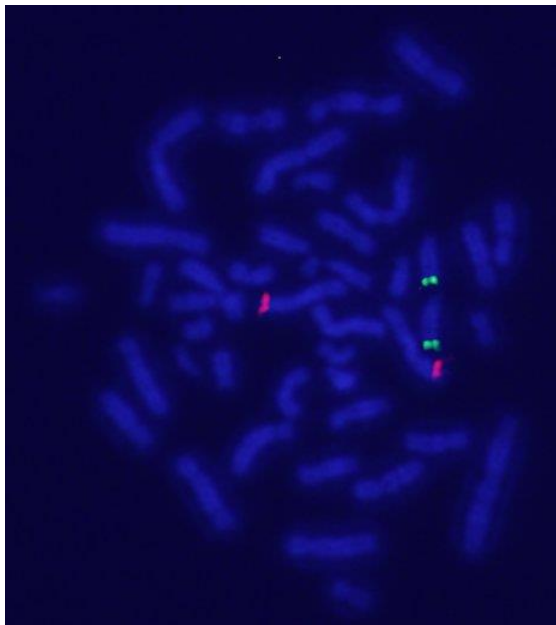
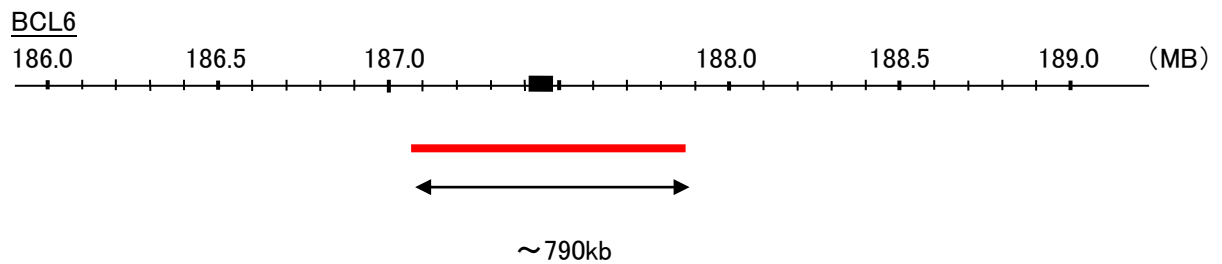
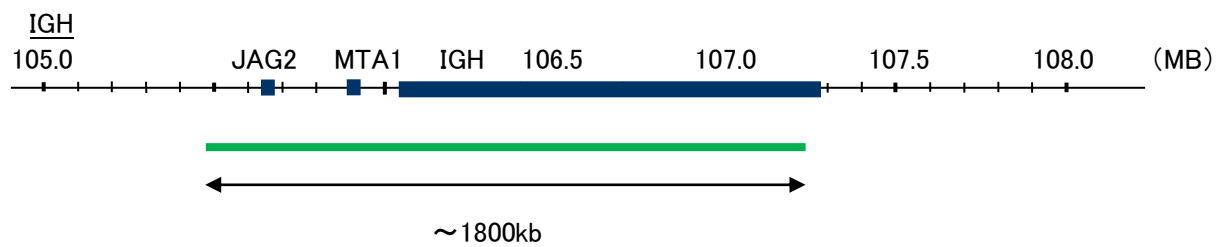
Probe IGH/BCL6, DY Translocation Dual Color FISH Probe  
Product No. TR054

#### IGH

Probe Size Approximately 1800kb  
Fluorophore FITC  
Location 14q32  
Also known as IGD1; IGH@; IGHJ; IGHV; IGHD@; IGHJ@; IGHV@; IGH.1@; IGHDY1

#### BCL6

Probe Size Approximately 790kb  
Fluorophore TexRed  
Location 3q27.3  
Also known as BCL5; LAZ3; BCL6A; ZNF51; ZBTB27



Representative images of normal human cell (lymphocyte) stain with the dual color FISH probe. The left image is chromosomes at metaphase, and the right image is an interphase nucleus.