

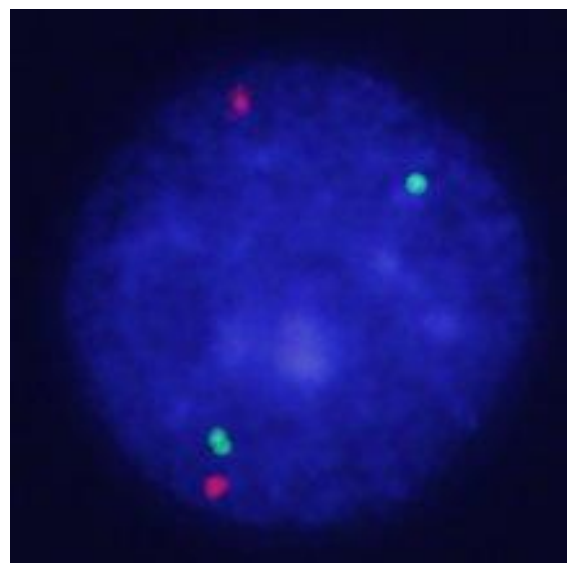
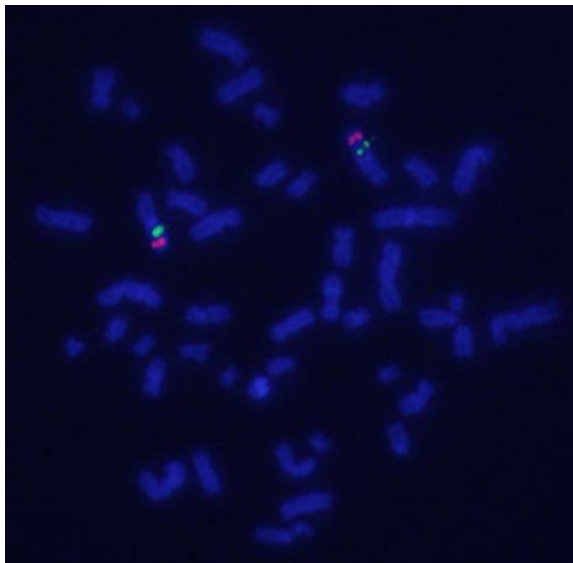
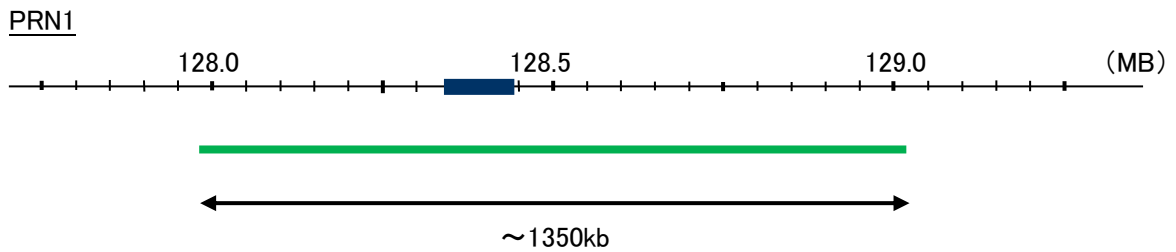
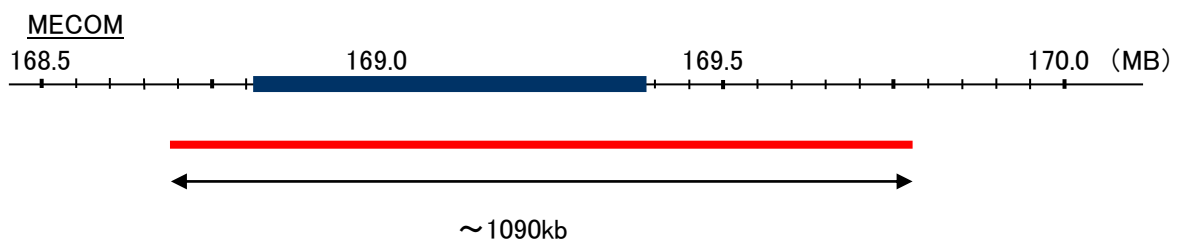
Probe MECOM/RPN1, DY Translocation Dual Color FISH Probe  
Product No. TR055

**MECOM**

Probe Size Approximately 1090kb  
Fluorophore TexRed  
Location 3q26.2  
Also known as EVI1; MDS1; KMT8E; PRDM3; RUSAT2; MDS1-EVI1; AML1-EVI-1

**RPN1**

Probe Size Approximately 1350kb  
Fluorophore FITC  
Location 3q21.3  
Also known as OST1; RBPH1



Representative images of normal human cell (lymphocyte) stain with the dual color FISH probe. The left image is chromosomes at metaphase, and the right image is an interphase nucleus.