

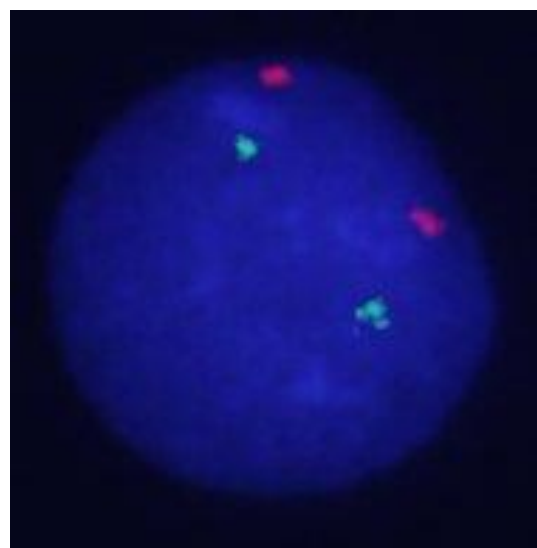
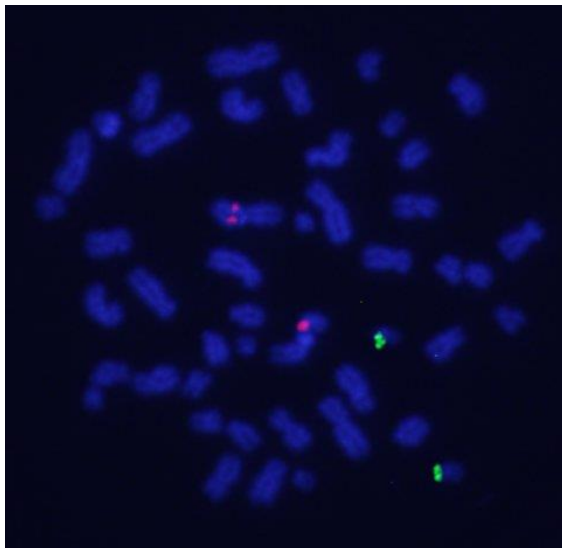
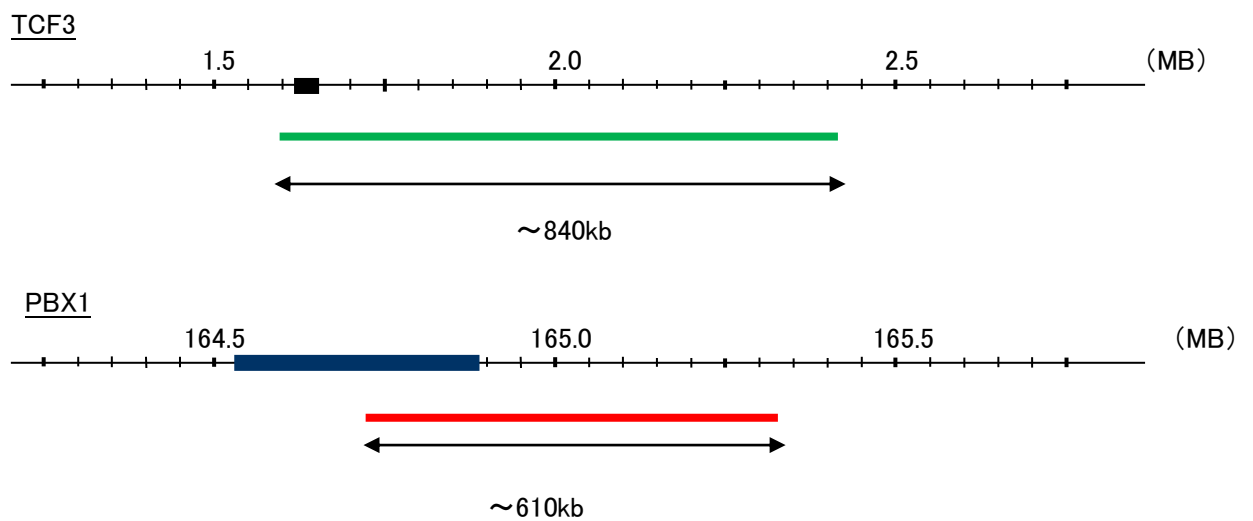
Probe TCF3/PBX1, SY Translocation Dual Color FISH Probe  
Product No. TR056

**TCF3**

Probe Size Approximately 840kb  
Fluorophore FITC  
Location 19p13.3  
Also known as E2A; E47; p75; AGM8; ITF1; VDIR; AGM8A; AGM8B; TCF-3; bHLHb21

**PBX1**

Probe Size Approximately 610kb  
Fluorophore TexRed  
Location 1q23.3  
Also known as CAKUHED



Representative images of normal human cell (lymphocyte) stain with the dual color FISH probe. The left image is chromosomes at metaphase, and the right image is an interphase nucleus.