

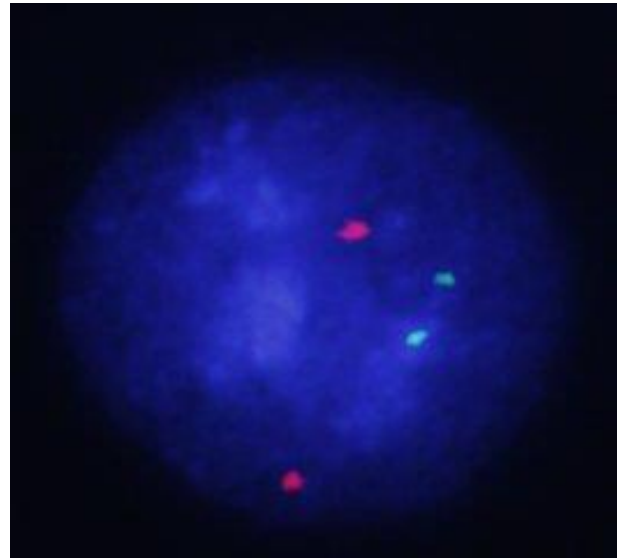
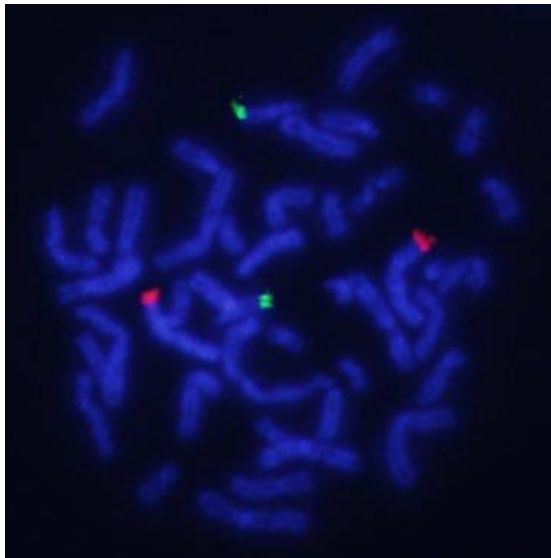
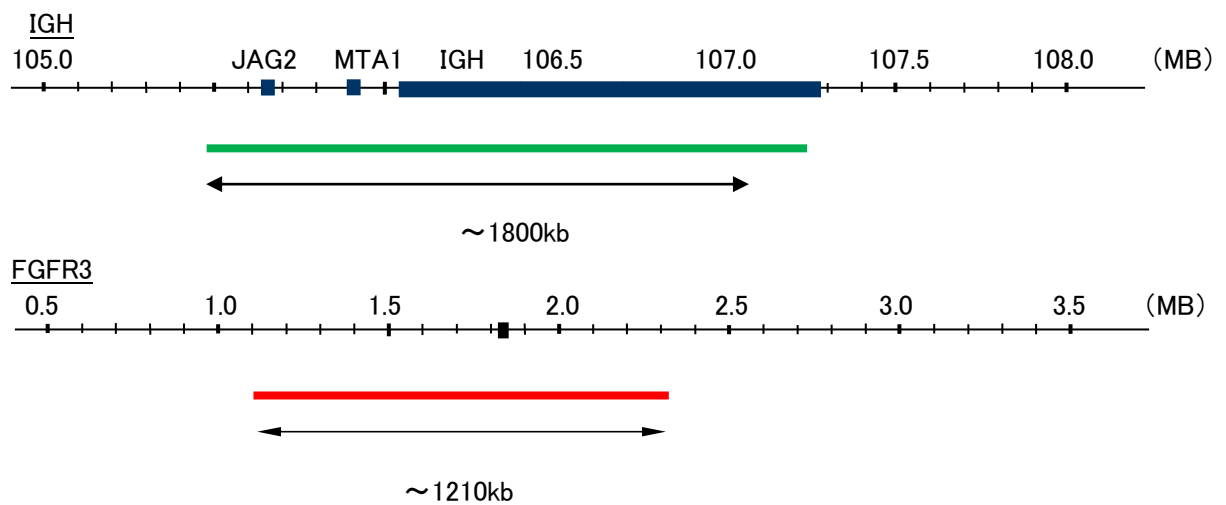
Probe IGH/FGFR3, DY Translocation Dual Color FISH Probe
Product No. TR059

IGH

Probe Size Approximately 1800kb
Fluorophore FITC
Location 14q32
Also known as IGD1; IGH@; IGHJ; IGHV; IGHD@; IGHJ@; IGHV@; IGH.1@; IGHDY1

FGFR3

Probe Size Approximately 1210kb
Fluorophore FITC
Location 4p16.3
Also known as ACH; CEK2; JTK4; CD333; HSGFR3EX



Representative images of normal human cell (lymphocyte) stain with the dual color FISH probe. The left image is chromosomes at metaphase, and the right image is an interphase nucleus.