

Probe AML1/ETV6,DY Translocation Dual Color FISH Probe
Product No. TR060

AML1

Probe Size Approximately 1370kb

Fluorophore FITC

Location 21q22.12

Also known as RUNX1; CBFA2; EVI-1; AMLCR1; PEBP2aB; CBF2alpha; AML1-EVI-1; PEBP2alpha

ETV6

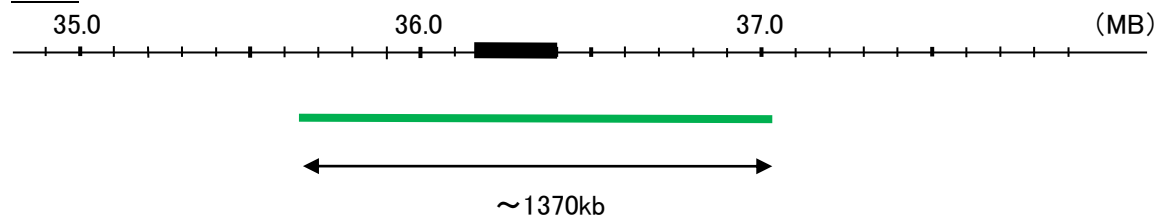
Probe Size Approximately 910kb

Fluorophore TexRed

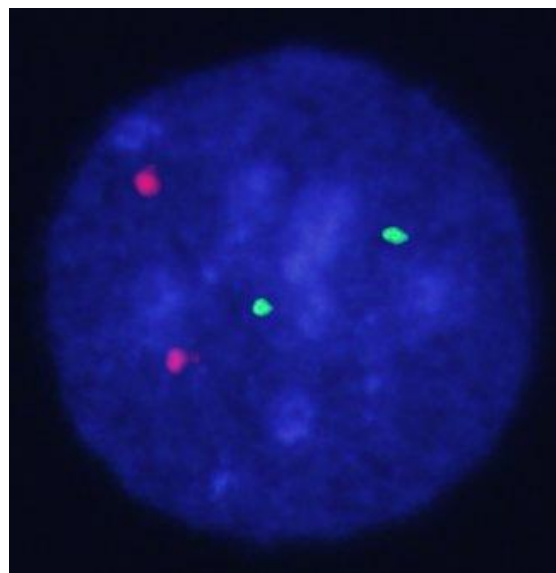
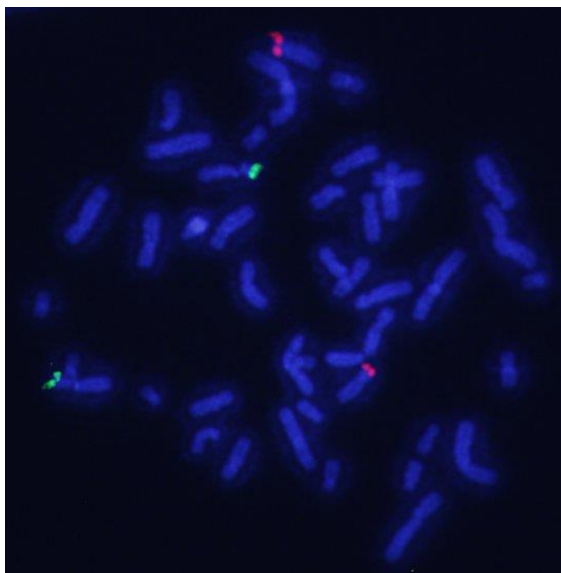
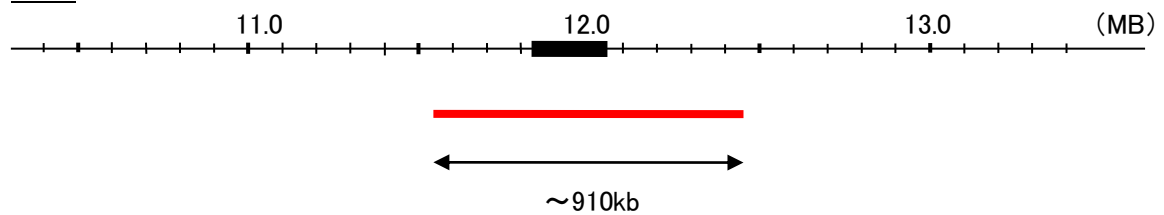
Location 12p13

Also known as TEL; THC5; TEL/ABL

AML1



ETV6



Representative images of normal human cell (lymphocyte) stain with the dual color FISH probe. The left image is chromosomes at metaphase, and the right image is an interphase nucleus.