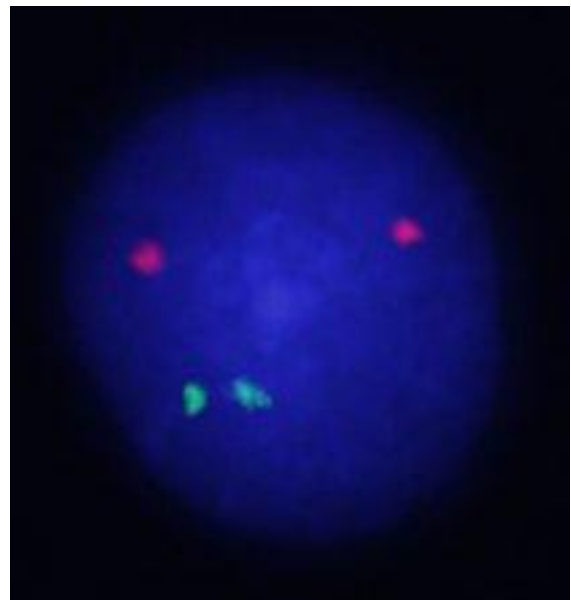
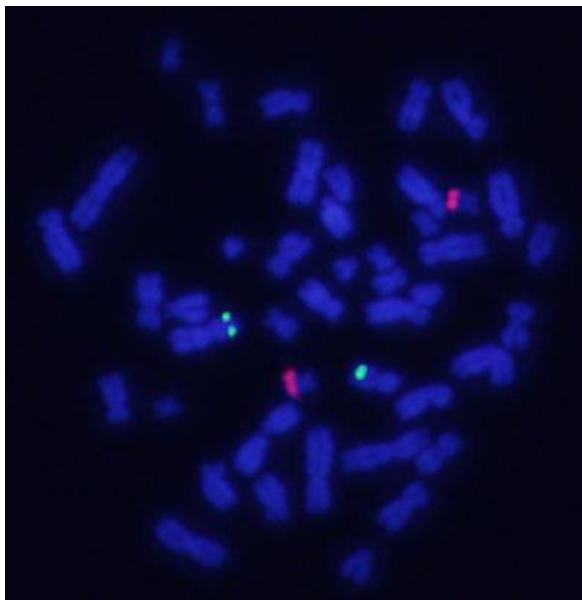
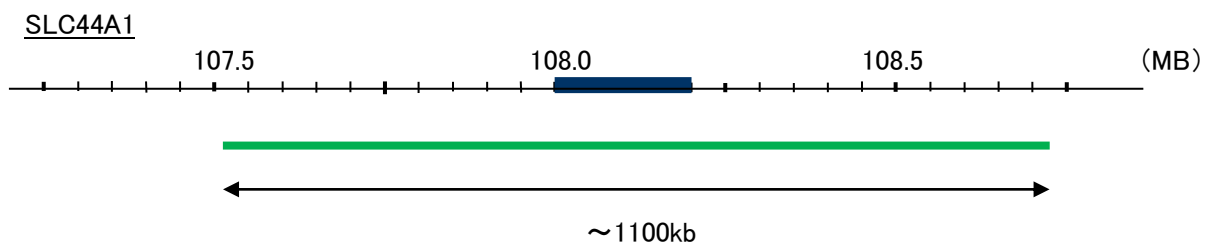
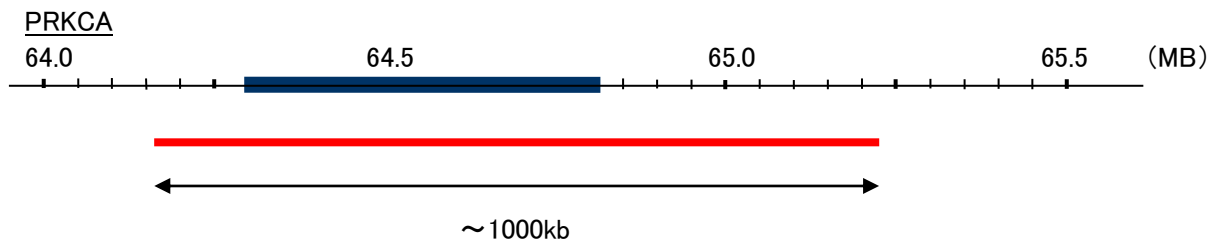


Probe PRKCA/SLC44A1, DY Dual Color FISH Probe
Product No TR061

PRKCA
Probe Size Approximately 1000kb
Fluorophore TexRed
Location 17q24.2
Also known as AAG6; PKCA; PRKACA; PKCI+/-; PKCalpha; PKC-alpha

SLC44A1
Probe Size Approximately 1200kb
Fluorophore FITC
Location 9q31.3-q31.2
Also known as CD92; CTL1; CDW92; CHTL1; CONATOC



Representative images of normal human cell (lymphocyte) stain with the dual color FISH probe. The left image is chromosomes at metaphase, and the right image is an interphase nucleus.