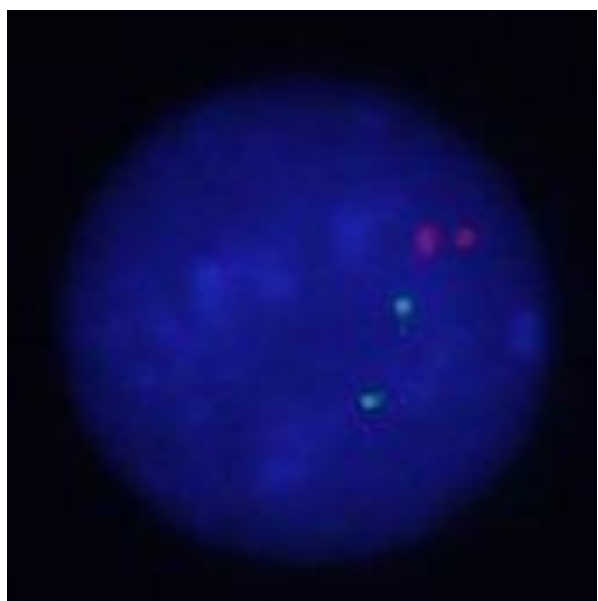
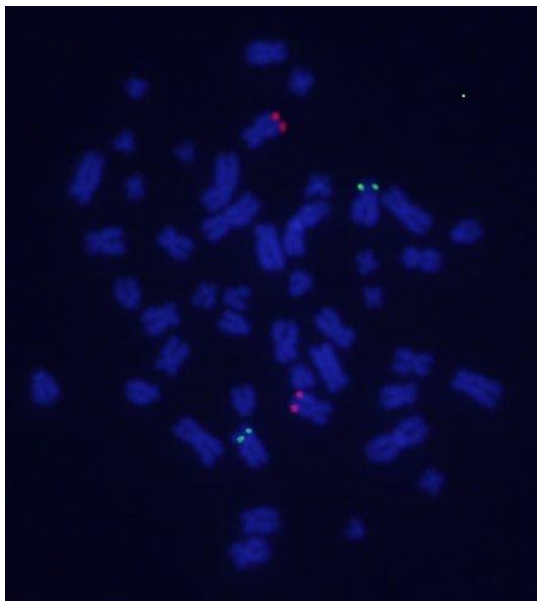
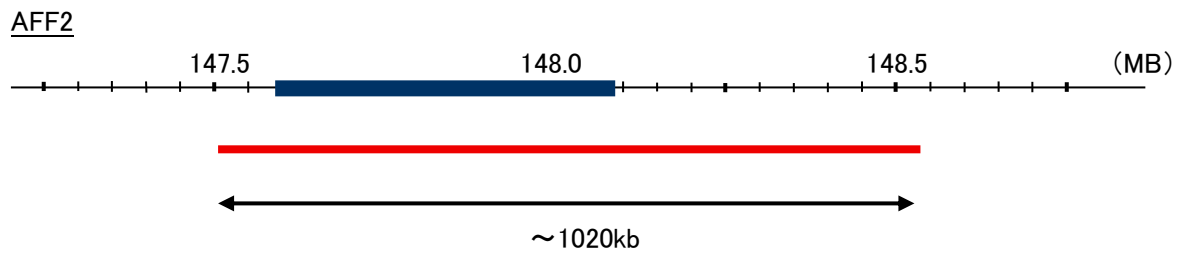
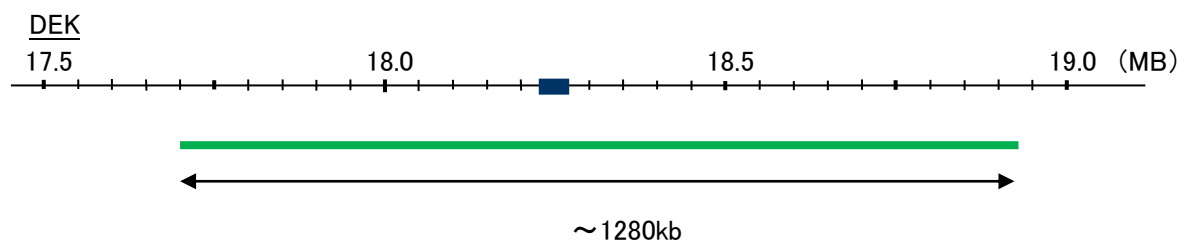


Probe DEK/AFF2, DY Translocation Dual Color FISH Probe
Product No TR062

DEK
Probe Size Approximately 1280kb
Fluorophore FITC
Location 6p22.3
Also known as D6S231E

AFF2
Probe Size Approximately 1020kb
Fluorophore TexRed
Location Xq28
Also known as FMR2; MRX2; OX19; FMR2P; FRAXE; XLID109



Representative images of normal human cell (lymphocyte) stain with the dual color FISH probe. The left image is chromosomes at metaphase, and the right image is an interphase nucleus.