

Probe KIF5B/RET, SY Translocation Dual Color FISH Probe  
Product No. TR009

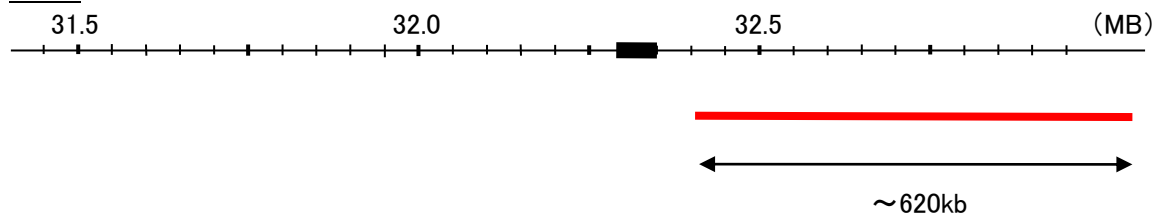
KIF5B

Probe Size Approximately 620kb  
Fluorophore TexRed  
Location 10p11.2  
Also known as asKNS; KINH; KNS1; UKHC; HEL-S-61

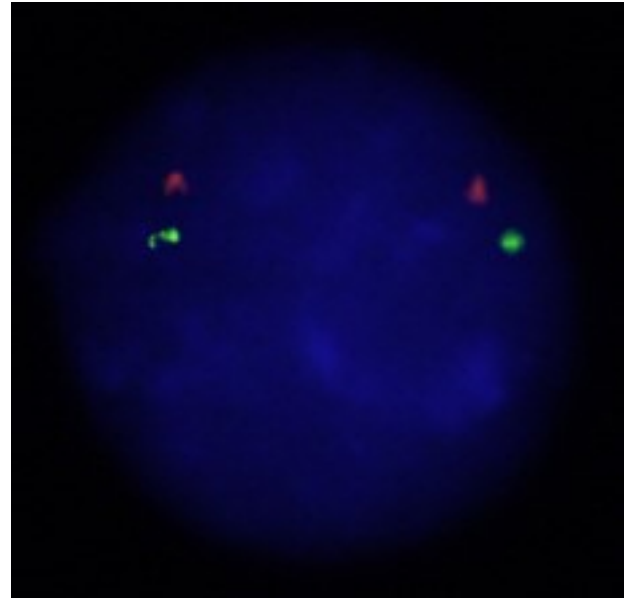
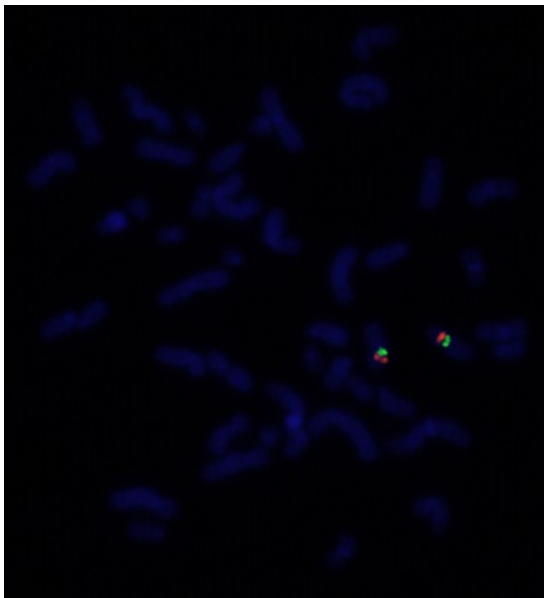
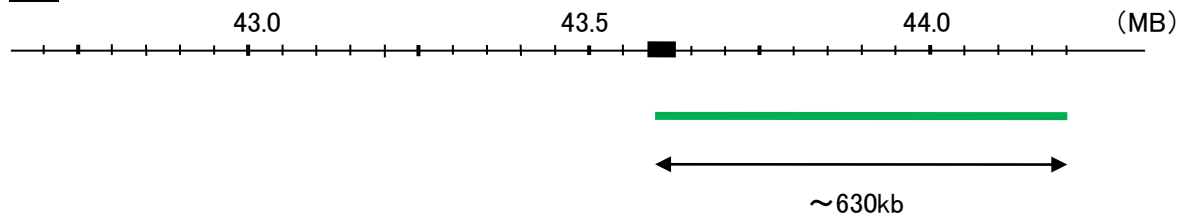
RET

Probe Size Approximately 630kb  
Fluorophore FITC  
Location 10q11.2  
Also known as PTC; MTC1; HSCR1; MEN2A; MEN2B; RET51; CDHF12; CDHR16; RET-ELE1

KIF5B



RET



Representative images of normal human cell (lymphocyte) stain with the dual color FISH probe. The left image is chromosomes at metaphase, and the right image is an interphase nucleus.