

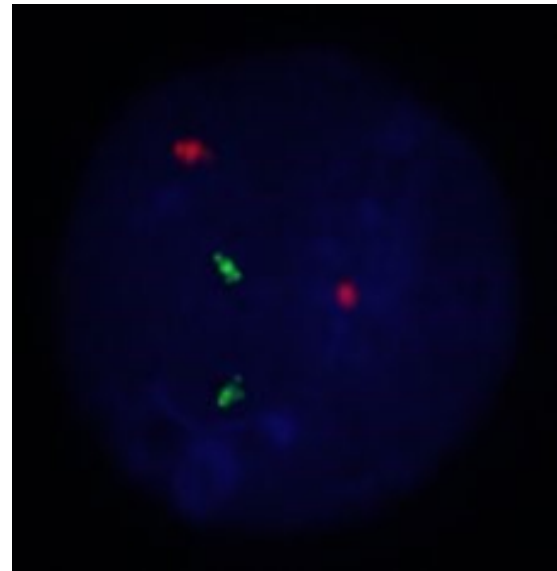
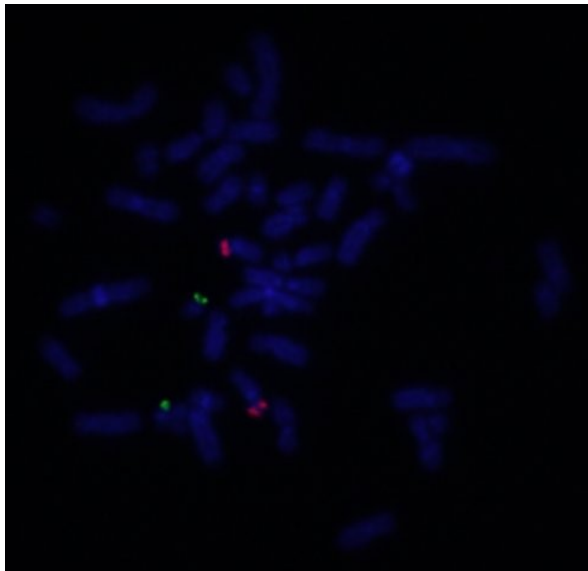
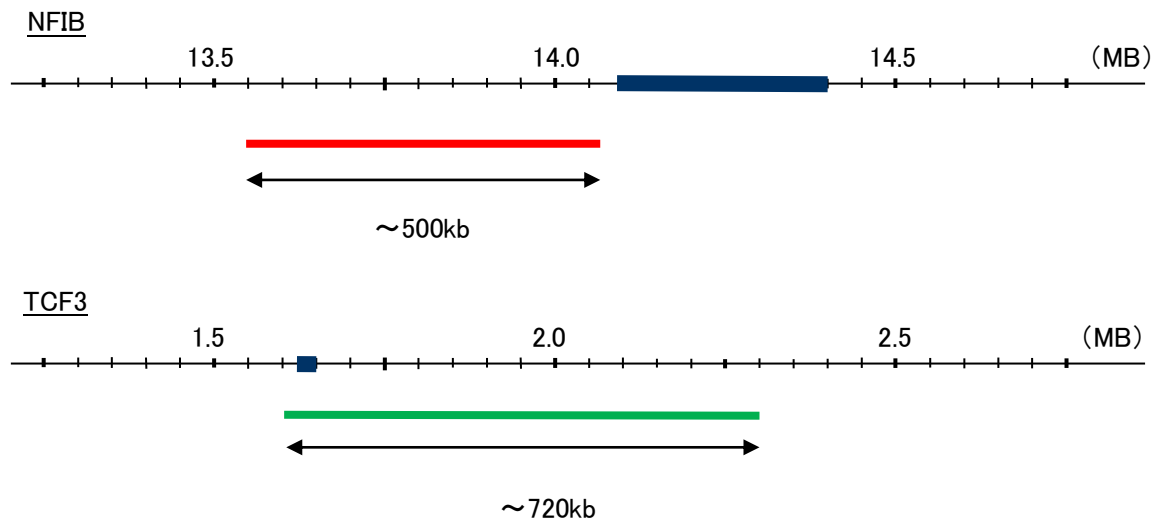
Probe NFIB/TCF3, SY Translocation Dual Color FISH Probe
Product No. TR016

NFIB

Probe Size Approximately 500kb
Fluorophore TexRed
Location 9p24.1
Also known as CTF; NF1-B; NFI-B; NFIB2; NFIB3; NF-I/B; NFI-RED; HMGIC/NFIB

TCF3

Probe Size Approximately 720kb
Fluorophore FITC
Location 19p13.3
Also known as E2A; E47; ITF1; VDIR; TCF-3; bHLHb21



Representative images of normal human cell (lymphocyte) stain with the dual color FISH probe. The left image is chromosomes at metaphase, and the right image is an interphase nucleus.