

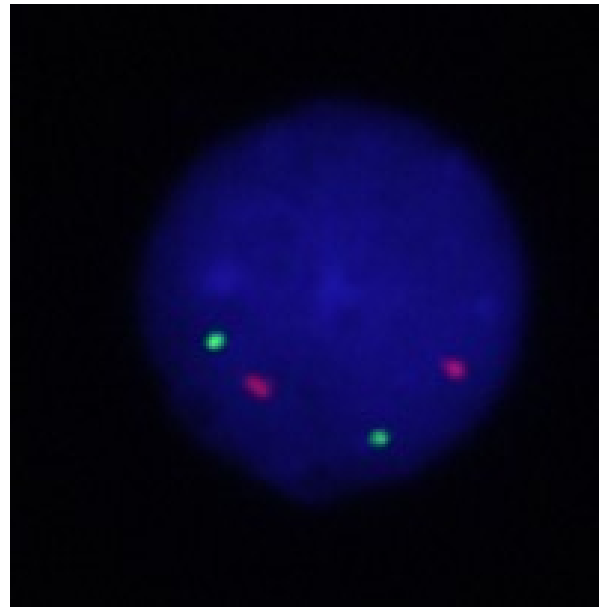
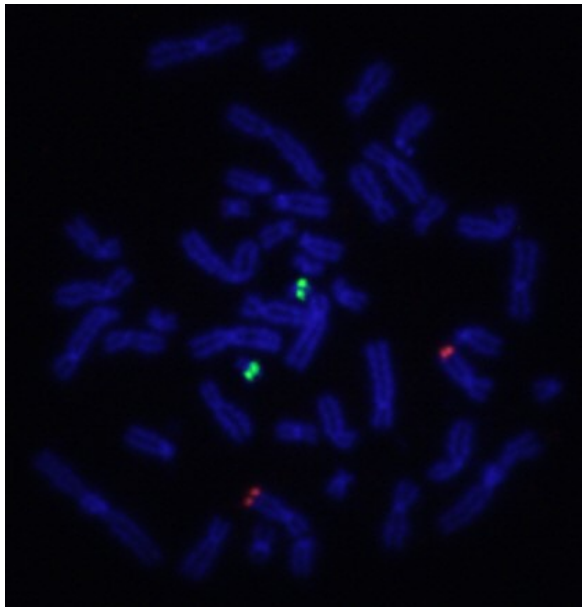
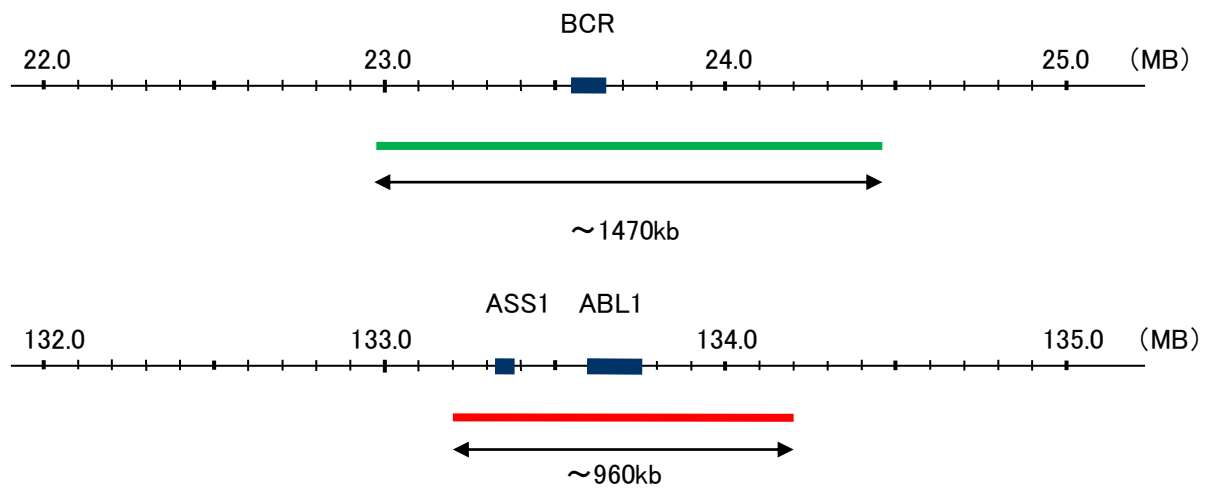
Probe BCR/ABL,DY Translocation Dual Color FISH Probe  
Product No. TR004

BCR

Probe Size Approximately 1470kb  
Fluorophore FITC  
Location 22q11.23  
Also known as ALL; CML; PHL; BCR1; D22S11; D22S662

ABL

Probe Size Approximately 960kb  
Fluorophore TexRed  
Location 9q34.1  
Also known as ABL1; JTK7; p150; c-ABL; v-abl; c-ABL1; bcr/abl



Representative images of normal human cell (lymphocyte) stain with the dual color FISH probe. The left image is chromosomes at metaphase, and the right image is an interphase nucleus.