

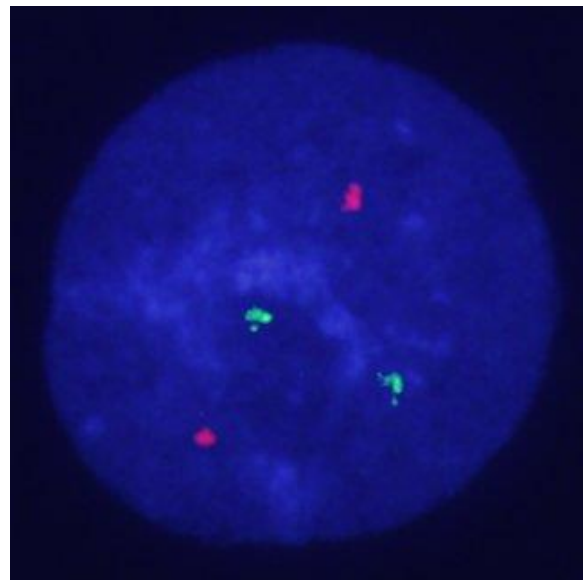
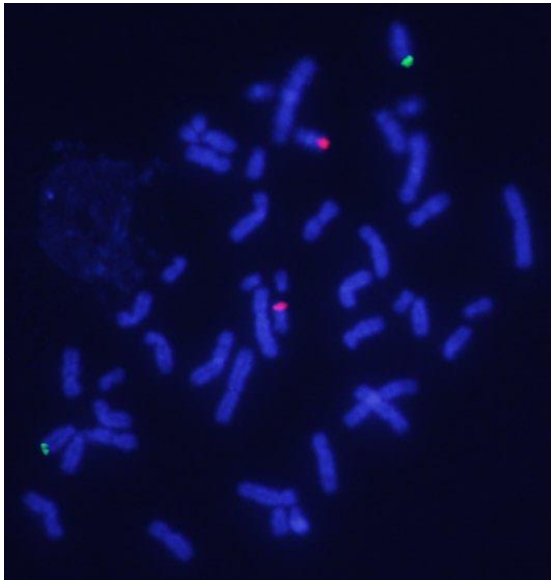
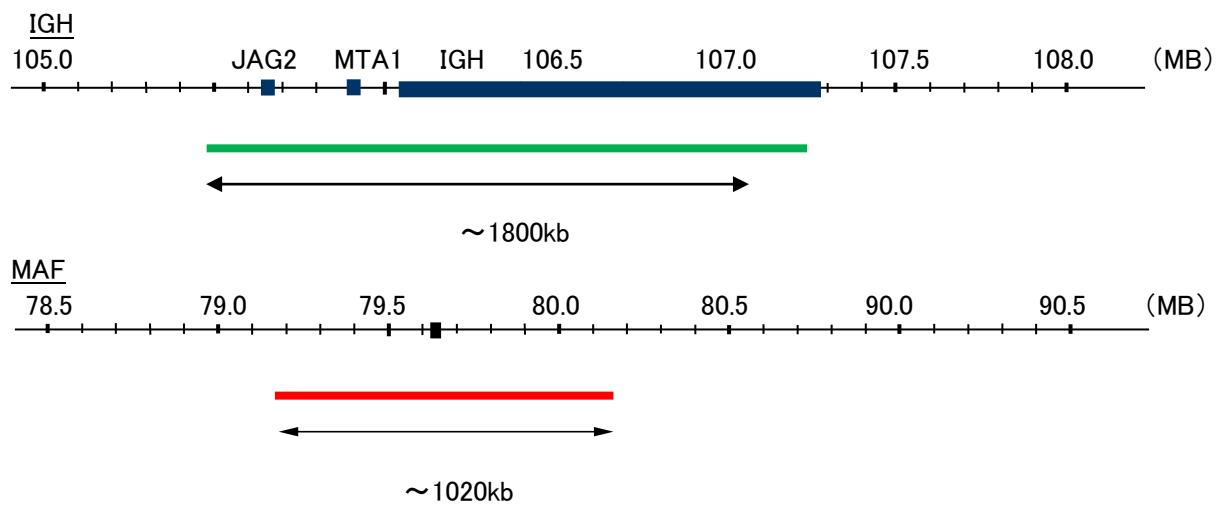
Probe IGH/MAF, DY Translocation Dual Color FISH Probe
Product No. TR058

IGH

Probe Size Approximately 1800kb
Fluorophore FITC
Location 14q32
Also known as IGD1; IGH@; IGHJ; IGHV; IGHD@; IGHJ@; IGHV@; IGH.1@; IGHDY1

MAF

Probe Size Approximately 1020kb
Fluorophore FITC
Location 16q23.2
Also known as CCA4; AYGRP; c-MAF; CTRCT21



Representative images of normal human cell (lymphocyte) stain with the dual color FISH probe. The left image is chromosomes at metaphase, and the right image is an interphase nucleus.