

Probe CSF1/VCAM1, SY Translocation Dual Color FISH Probe
Product No. TR039

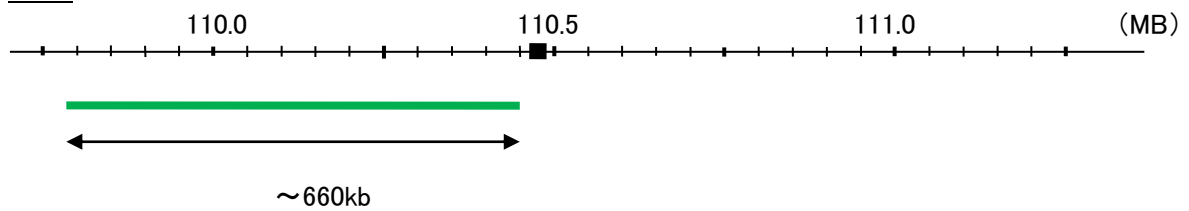
CSF1

Probe Size Approximately 660kb
Fluorophore FITC
Location 1p13.3
Also known as MCSF; CSF-1

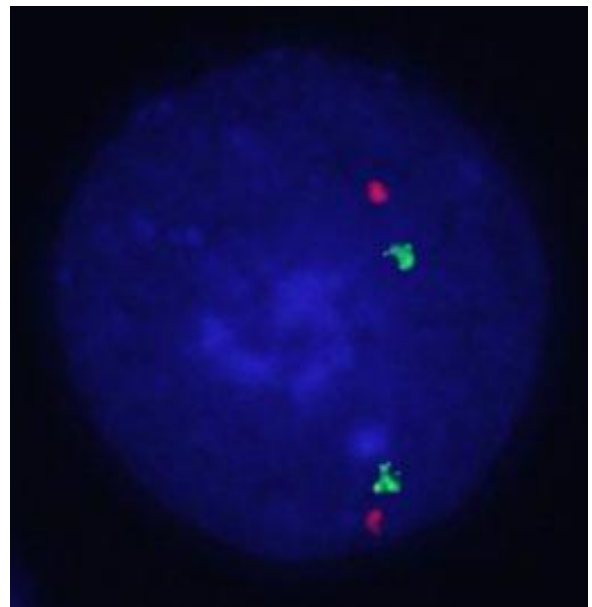
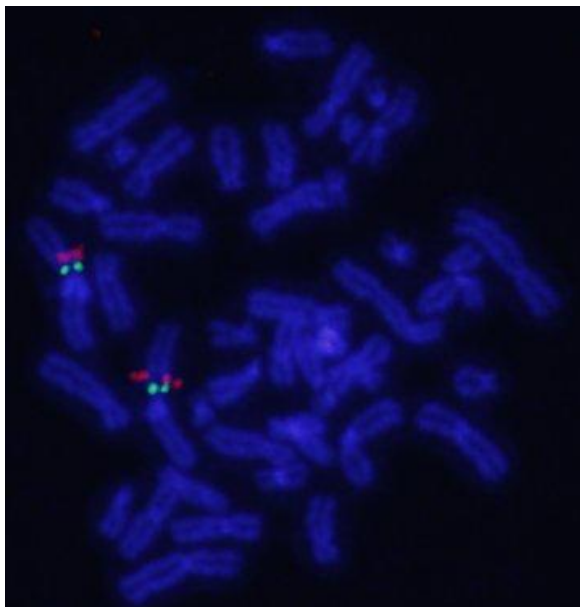
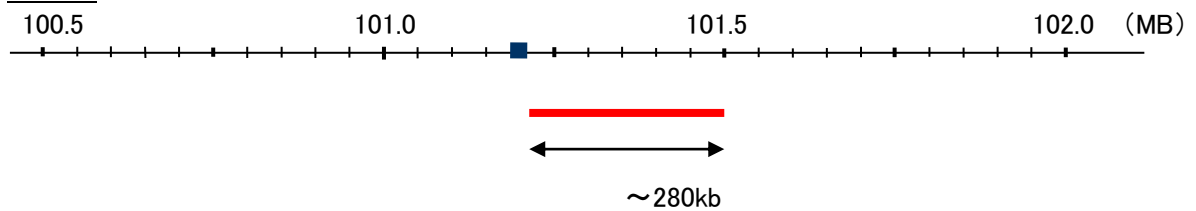
VCAM1

Probe Size Approximately 280kb
Fluorophore TexRed
Location 1p21.2
Also known as CD106; INCAM-100

CSF1



VCAM1



Representative images of normal human cell (lymphocyte) stain with the dual color FISH probe. The left image is chromosomes at metaphase, and the right image is an interphase nucleus.