

# FISH probe for ES cell and iPS cell (chromosomal aberration analyses)

## 4-Color FISH Probe

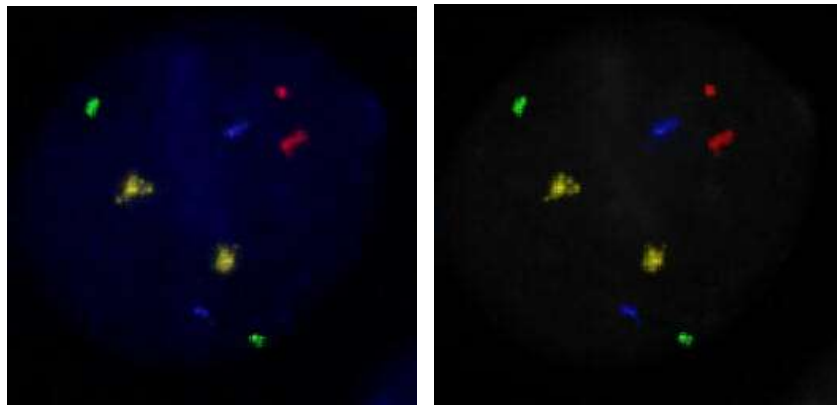
When ES and iPS cell are cultivated continually, abnormality easiness to change to chromosomes 1, 12, 17 and 20.

This FISH Probe can analyze 4 kinds of chromosome at the same time.

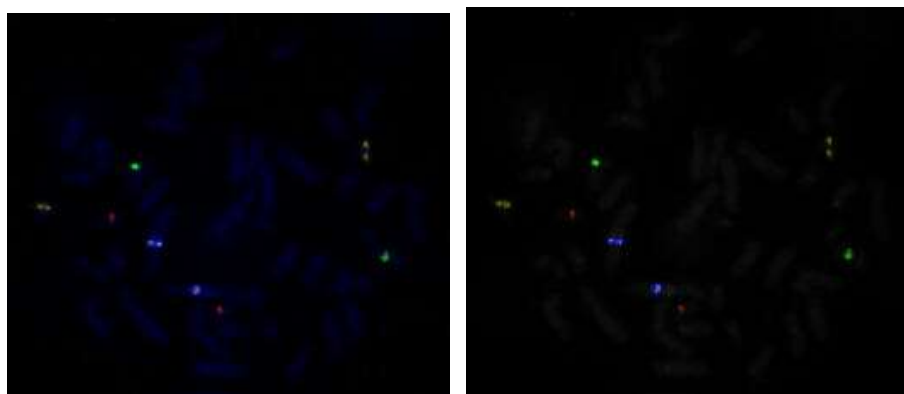
| No | Product Name  | Cat. ID | Quantity | Price(JPY) |
|----|---|---------|----------|------------|
| 1  | CEN1p(DEAC)/12q(FITC)/17q(TexRed) /<br>20q11.21(R6G) FISH Probe | CM4001  | 200 ul   | 294,000    |

note) 20q11.21 (ID1, BCL2L1 and HM13)

4 kinds of chromosomal aberration can be analyzed at the same time by nucleus.



4 kinds of chromosomal aberration can be analyzed at the same time by chromosome.



All images are using a normal lymphocyte specimen.

Reference : Nat Biotechnol. 2011 Nov 27;29(12):1132-44. doi: 10.1038/nbt.2051.

製造元

株式会社 GSP 研究所

<http://www.gsplab.co.jp/>